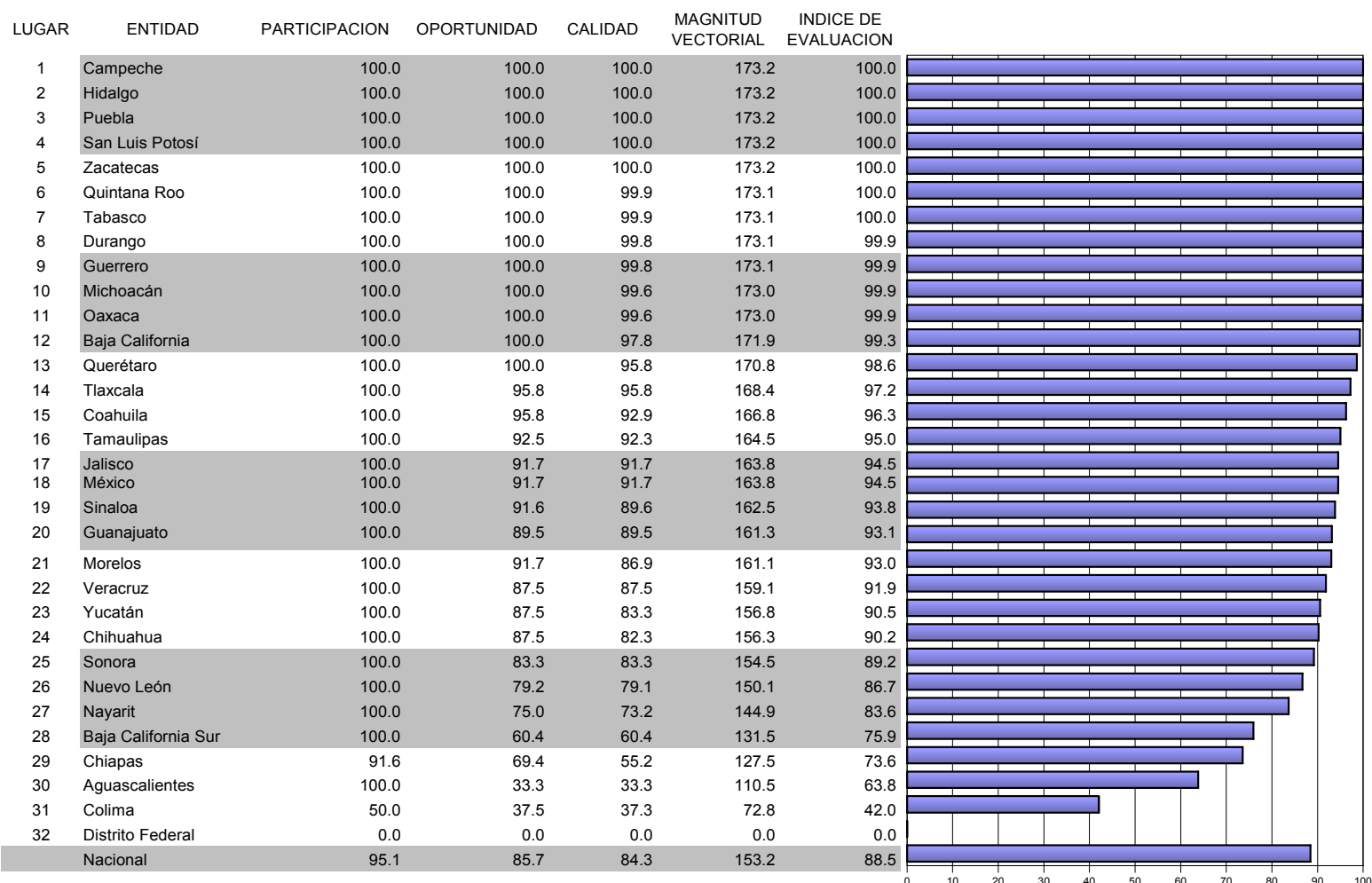



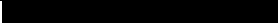


Caminando a la Excelencia

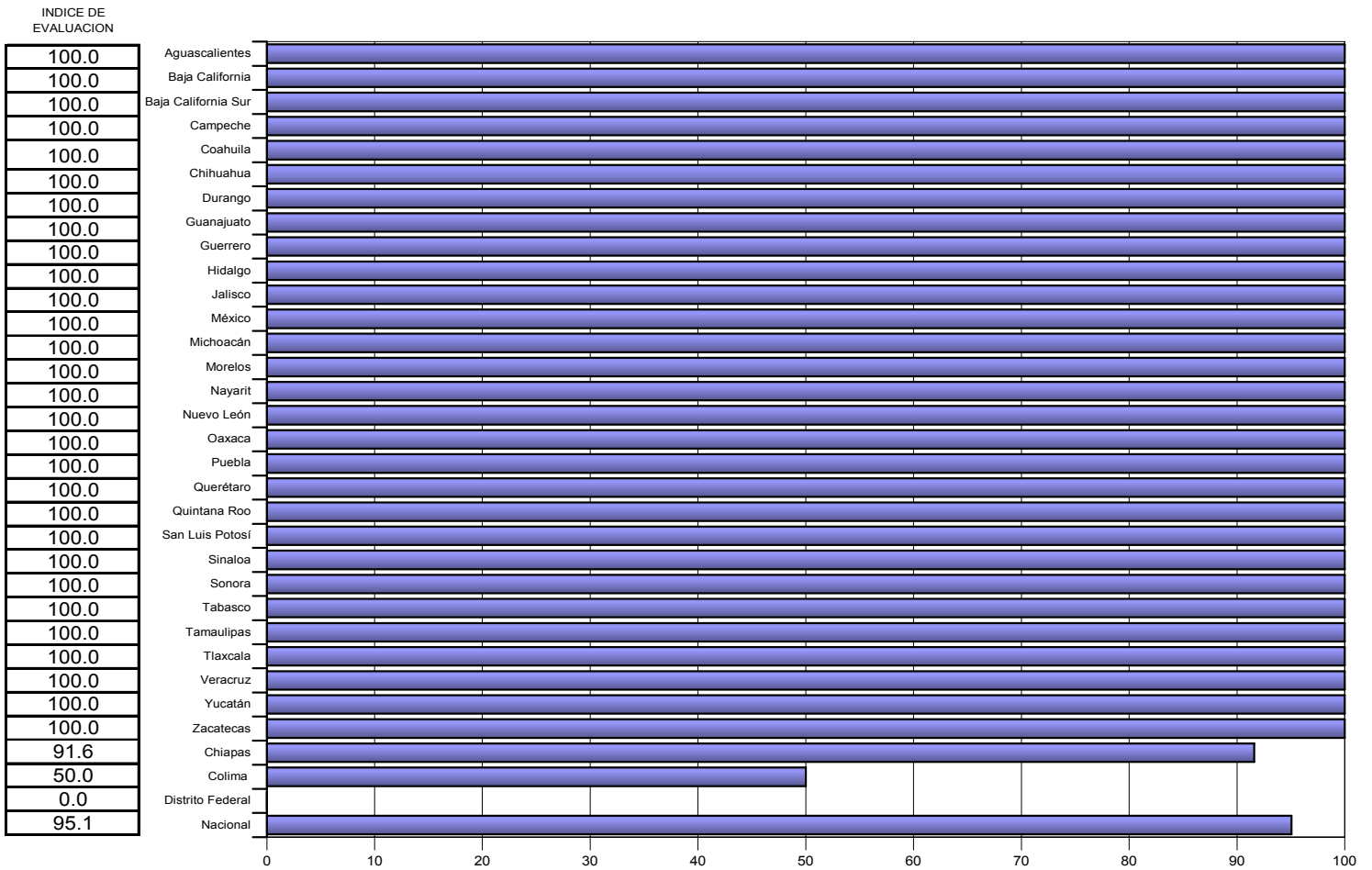
Informe

cierre 2004

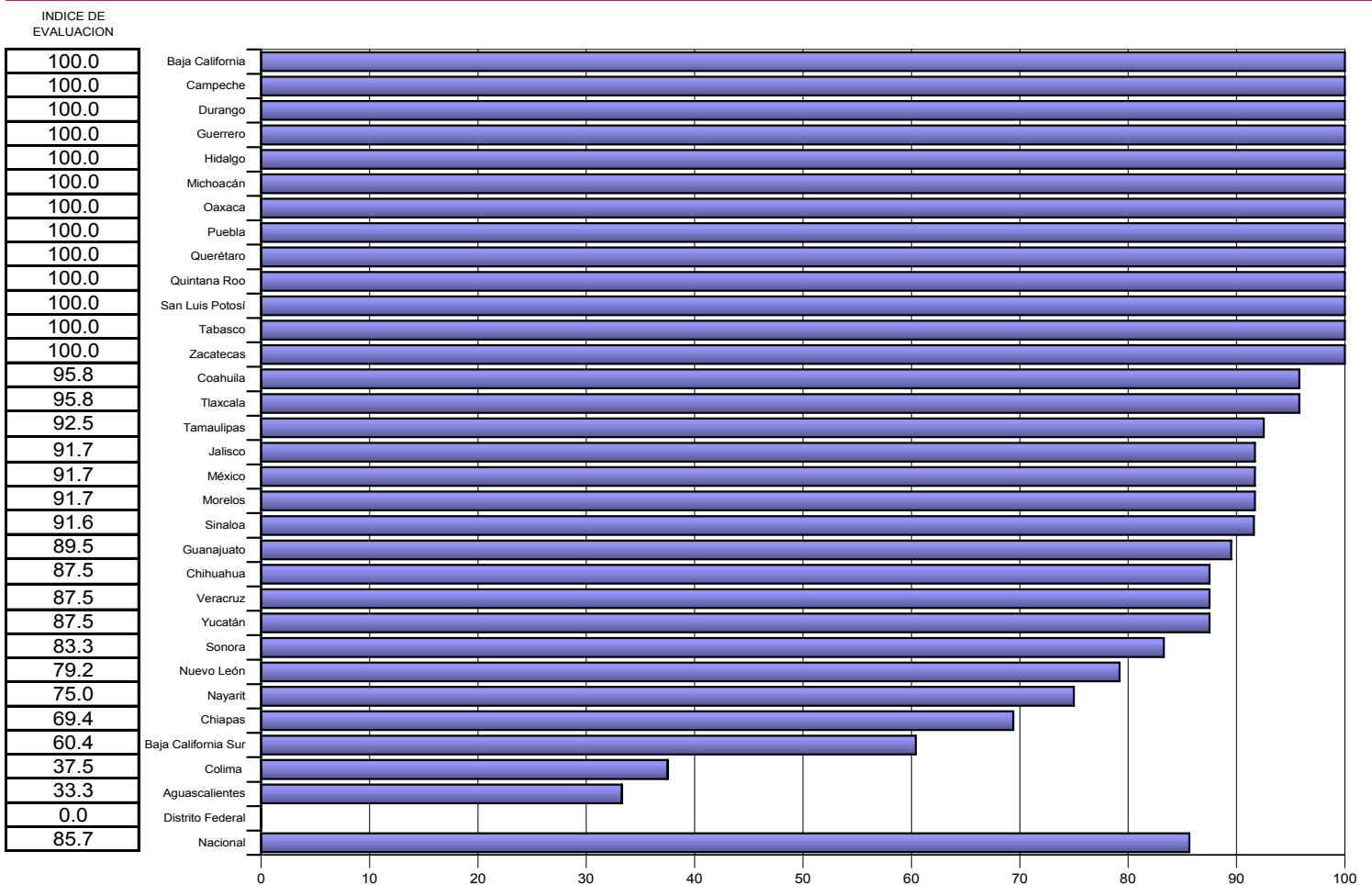


Categoría	Intervalo	Gradiente de evaluación
Sobresaliente	> 90.0	
Satisfactorio	80.0-90.0	
Mínimo	60.0-79.9	
Precario	< 60.0	

PARTICIPACION

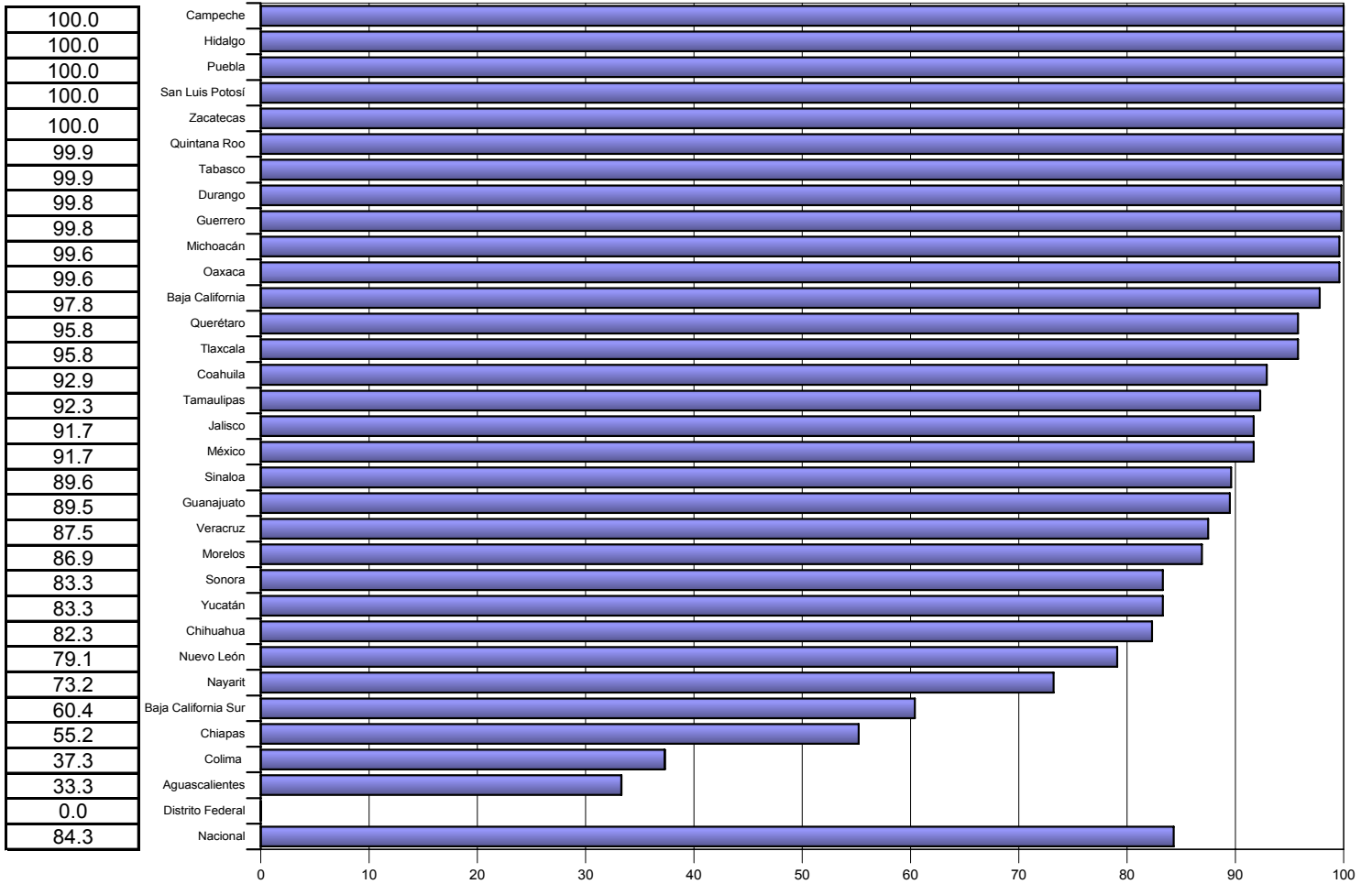


OPORTUNIDAD



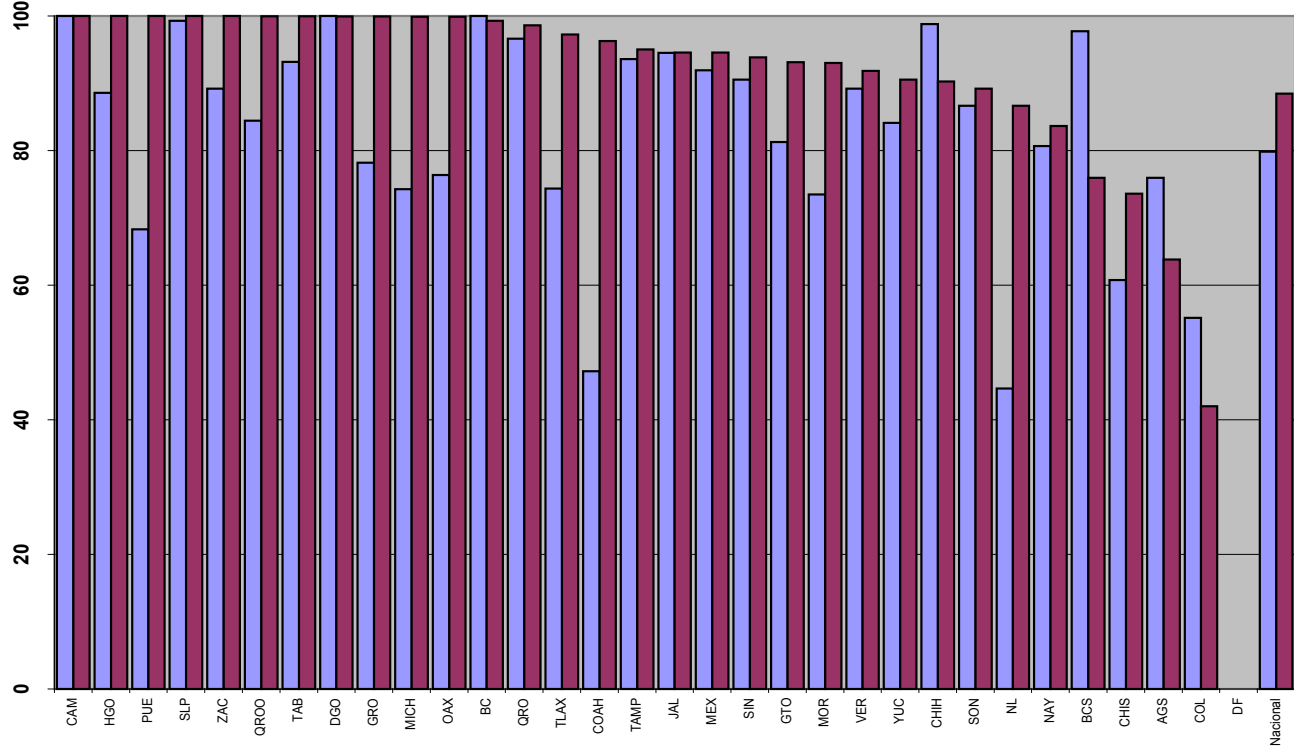
CALIDAD

INDICE DE
EVALUACION

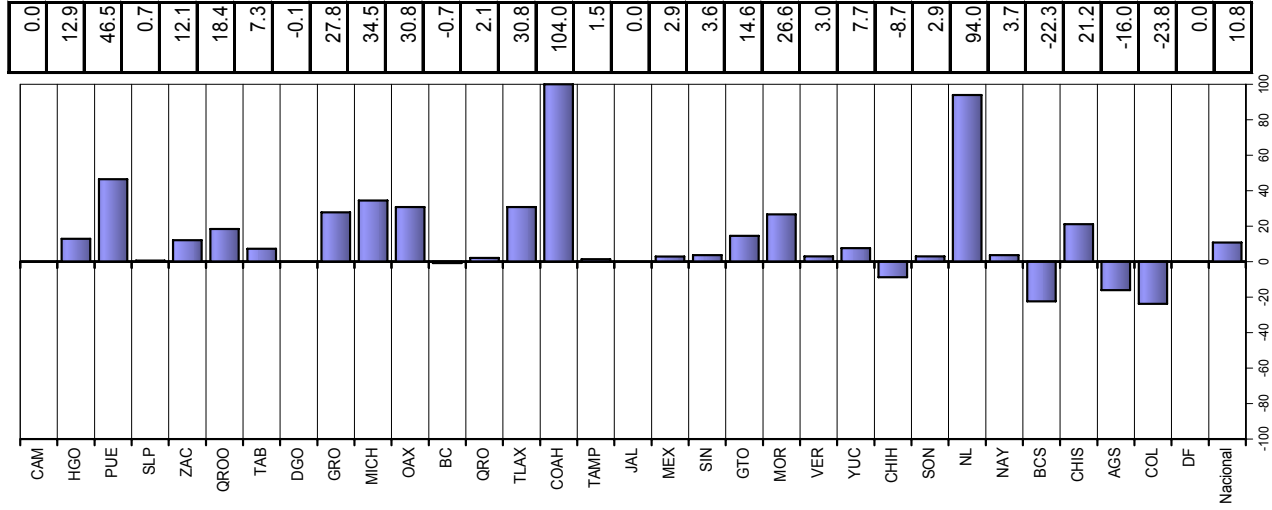


cierra 2003	cierra 2004
100.0	100.0
88.6	100.0
68.3	100.0
99.3	100.0
89.2	100.0
84.4	100.0
93.2	100.0
100.0	99.9
78.2	99.9
74.3	99.9
76.4	99.9
100.0	99.3
96.6	98.6
74.3	97.2
47.2	96.3
93.6	95.0
94.5	94.5
91.9	94.5
90.5	93.8
81.2	93.1
73.5	93.0
89.2	91.9
84.1	90.5
98.8	90.2
86.7	89.2
44.7	86.7
80.7	83.6
97.7	75.9
60.7	73.6
75.9	63.8
55.1	42.0
0.0	0.0
79.8	88.5

Índice de desempeño vectorial cierre 2003 y cierre 2004



Índice de comparación entre cierre 2004 - cierre 2003 (%)



cierra 2003	Vector diferencia entre			Magnitud
	1	2	3	
0.0	0.0	0.0	0.0	0.0
0.0	20.9	14.7	25.6	25.6
25.0	33.3	37.5	56.0	56.0
0.0	0.0	2.1	2.1	2.1
0.0	16.7	16.7	23.6	23.6
0.0	23.0	26.0	34.7	34.7
0.0	8.3	12.5	15.0	15.0
0.0	0.0	-0.2	0.2	0.2
0.0	33.3	37.4	50.1	50.1
4.2	33.4	45.4	56.5	56.5
0.0	38.8	38.4	54.6	54.6
0.0	0.0	-2.2	2.2	2.2
0.0	0.0	6.3	6.3	6.3
12.5	25.0	33.3	43.5	43.5
35.4	60.4	57.5	90.6	90.6
0.0	0.9	3.5	3.6	3.6
0.0	0.0	0.0	0.1	0.1
0.0	0.0	8.4	8.4	8.4
0.0	4.1	6.3	7.5	7.5
0.0	17.7	21.4	27.7	27.7
12.5	16.8	32.8	38.9	38.9
0.0	4.2	4.2	5.9	5.9
0.0	12.6	8.4	15.1	15.1
0.0	-10.7	-15.9	19.2	19.2
0.0	3.7	4.6	5.9	5.9
33.3	51.5	51.4	80.0	80.0
0.0	0.0	10.7	10.7	10.7
0.0	-36.2	-36.2	51.2	51.2
2.8	27.8	17.1	32.8	32.8
0.0	-29.2	-25.0	38.4	38.4
-25.0	-8.3	-0.1	26.3	26.3
0.0	0.0	0.0	0.0	0.0
3.1	10.9	13.0	17.3	17.3

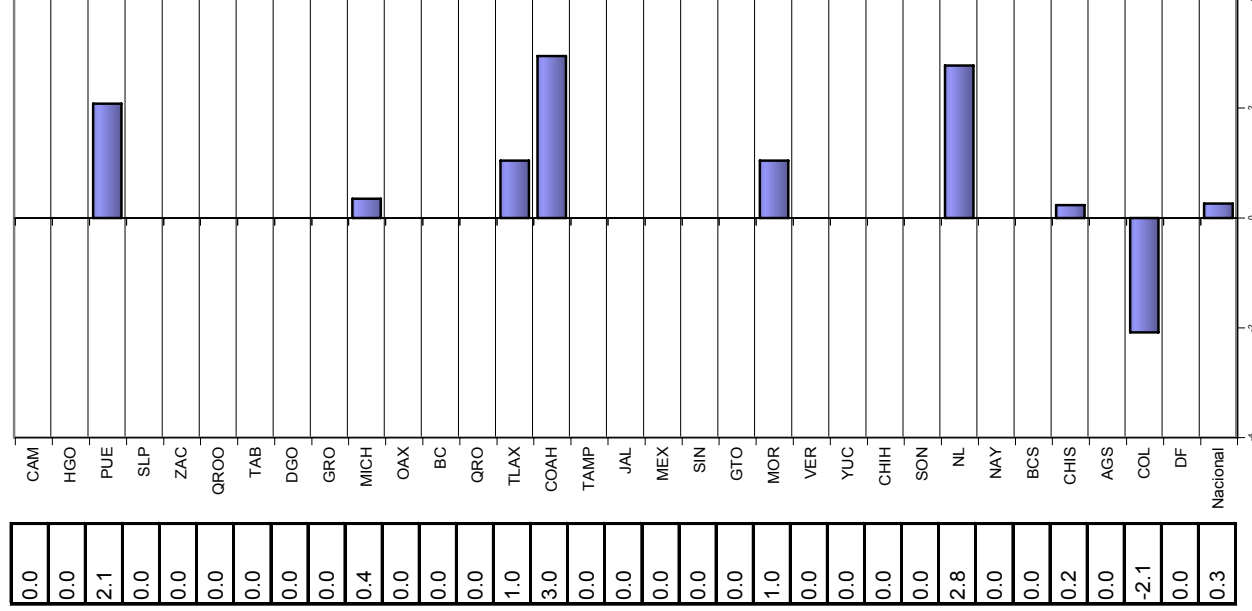
INDICADORES
 1.PARTICIPACION
 2.OPORTUNIDAD
 3.CALIDAD

Velocidad de cambio de los componentes de SISVEA Acción para el periodo

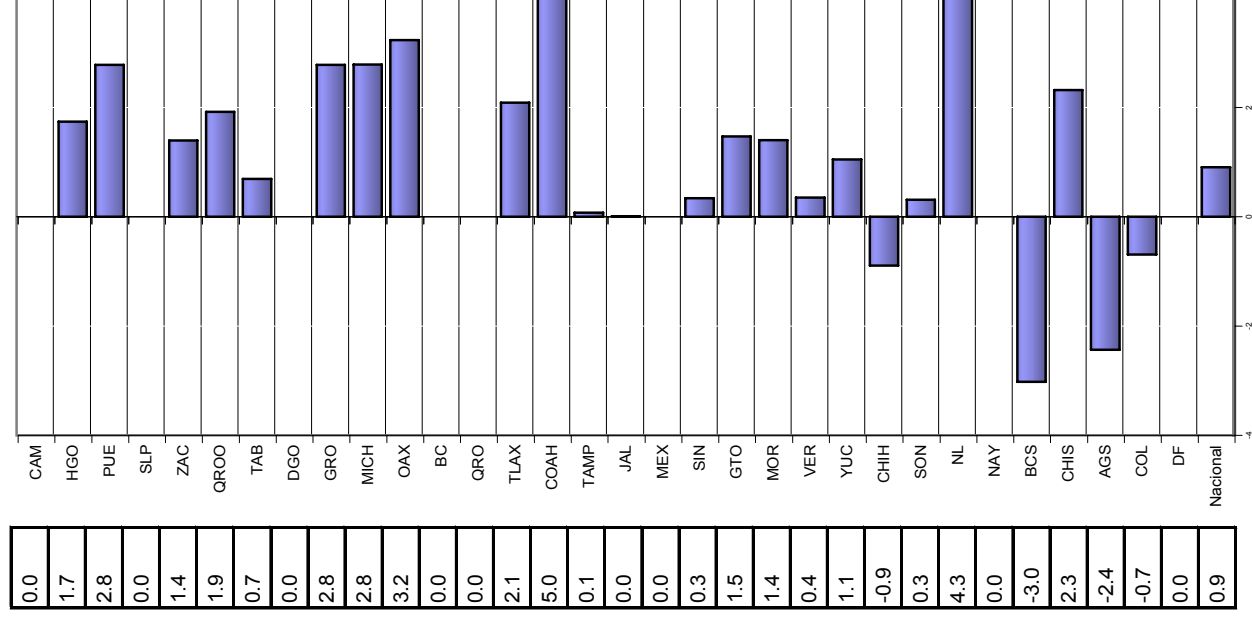
cierre 2003

- cierre 2004

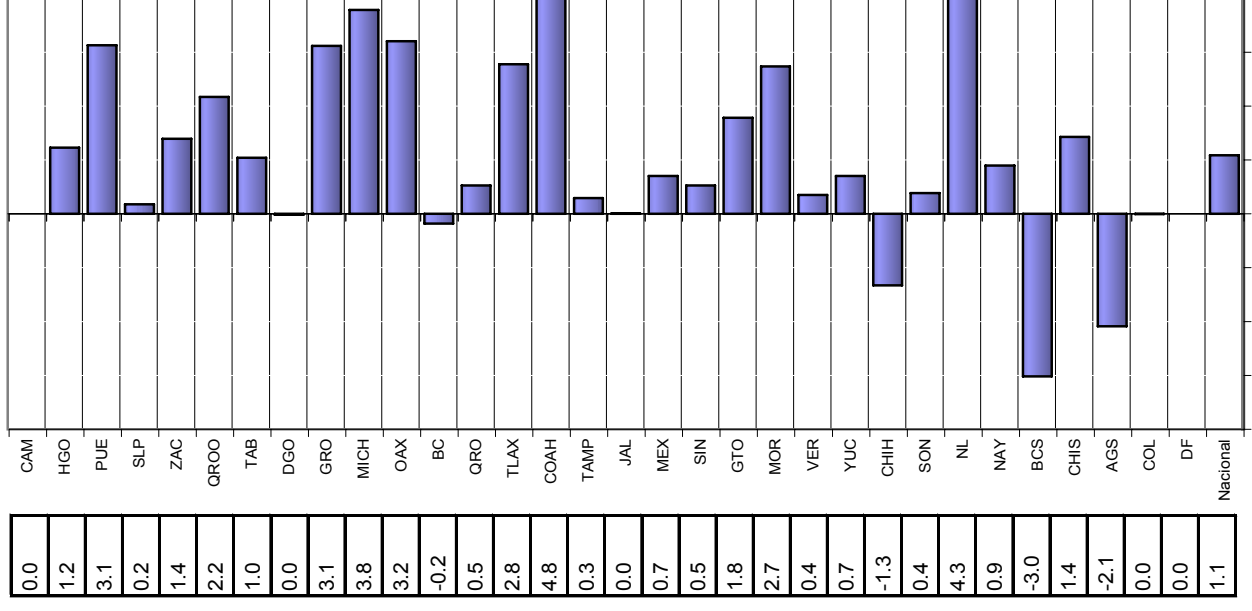
PARTICIPACION



OPORTUNIDAD



CALIDAD



DEFINICION DE INDICADORES QUE INTEGRAN LA EVALUACION DEL SISVEA

1. Participación: Opera o no la entidad en el sistema

2. Oportunidad: $\text{Número de informes recibidos dentro del periodo establecido} / \text{total de informes esperados} \times 100$

3. Calidad: $\text{Número de informes recibidos dentro del periodo establecido con el registro de las variables seleccionadas, sin error} / \text{total informes recibidos dentro del periodo establecido} \times 100$