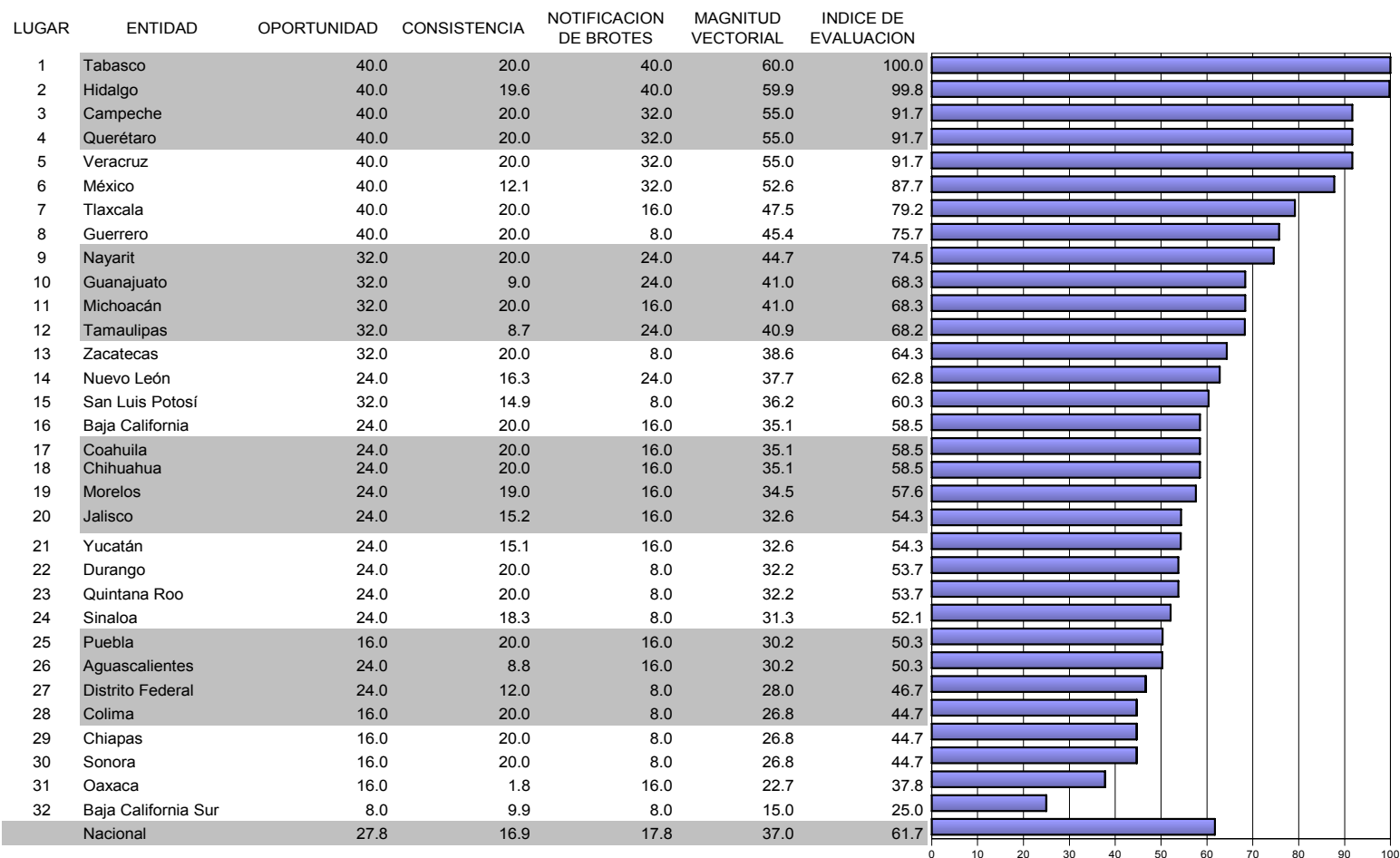






## Caminando a la Excelencia

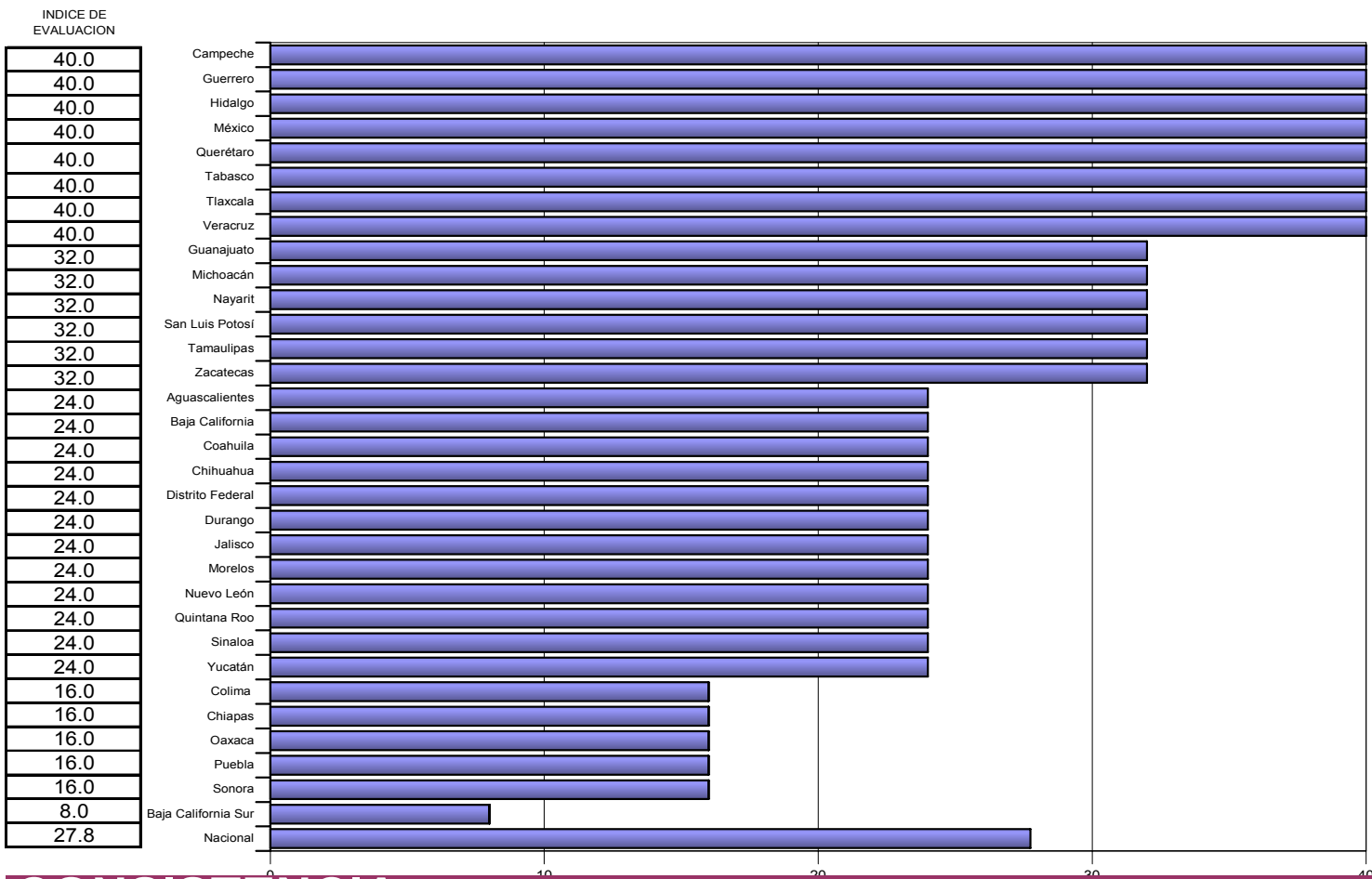
Informe

cierre2004

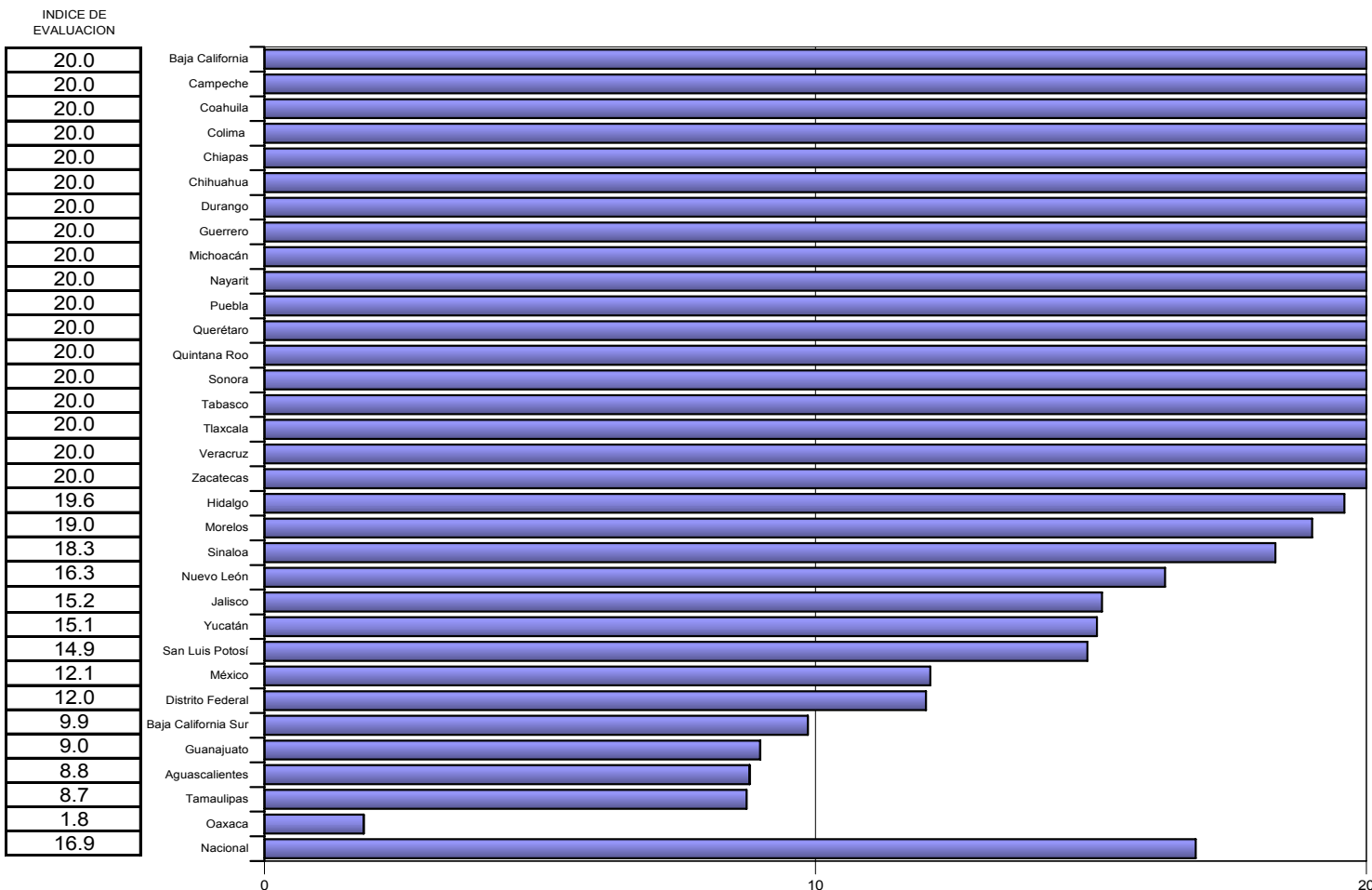


Categoría	Intervalo	Gradiente de evaluación
Sobresaliente	> 90.0	
Satisfactorio	80.0-90.0	
Mínimo	60.0-79.9	
Precario	< 60.0	

# OPORTUNIDAD



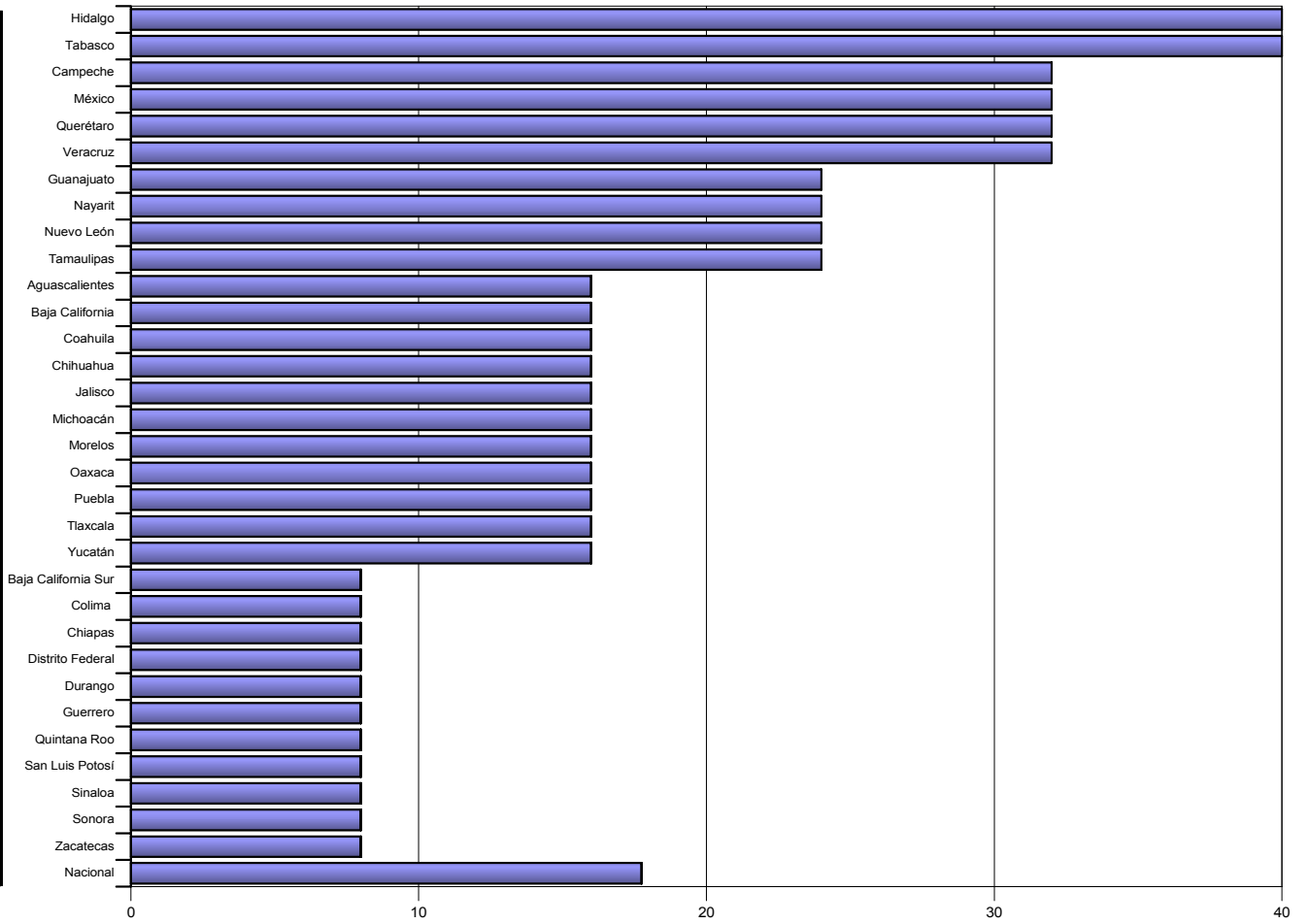
# CONSISTENCIA

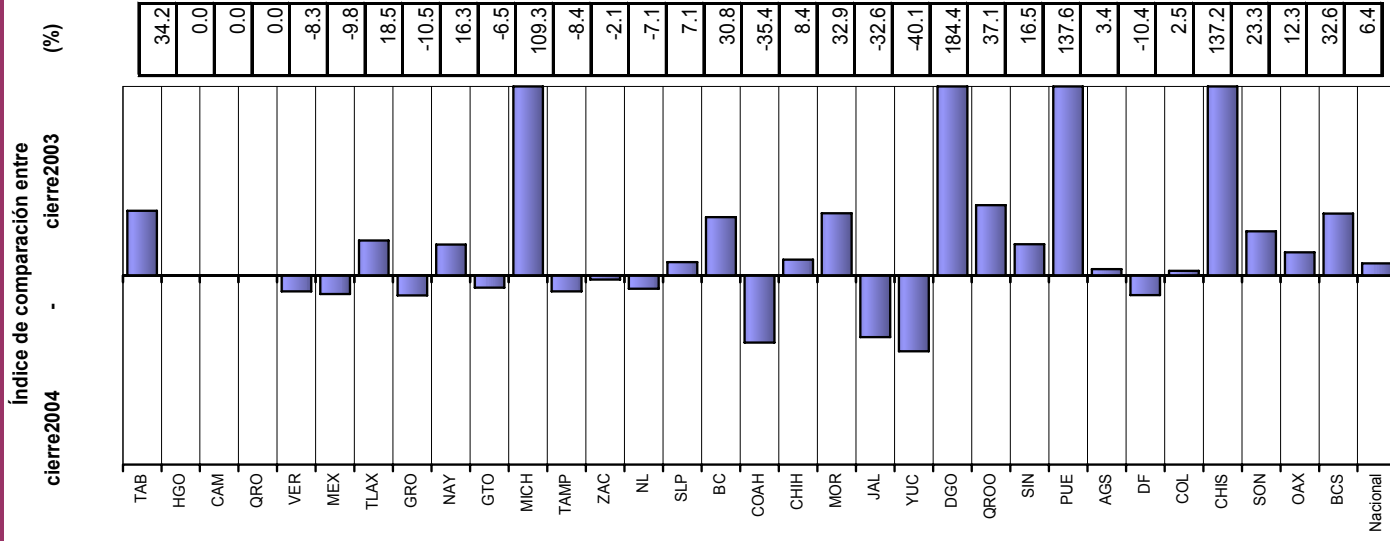
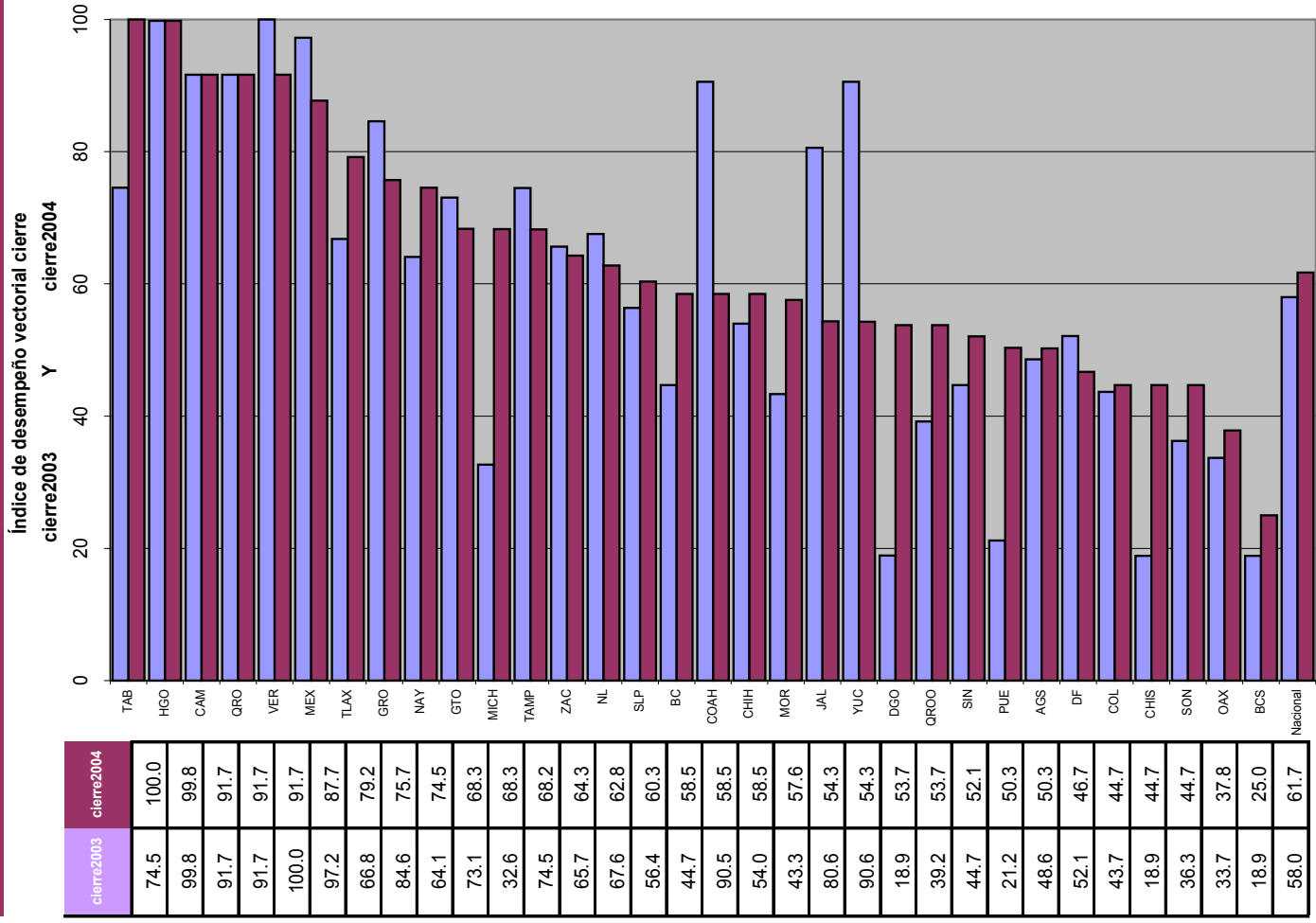


# NOTIFICACION DE BROTES

INDICE DE  
EVALUACION

40.0
40.0
32.0
32.0
32.0
32.0
24.0
24.0
24.0
24.0
16.0
16.0
16.0
16.0
16.0
16.0
16.0
16.0
16.0
16.0
16.0
8.0
8.0
8.0
8.0
8.0
8.0
8.0
8.0
8.0
8.0
8.0
8.0
17.8



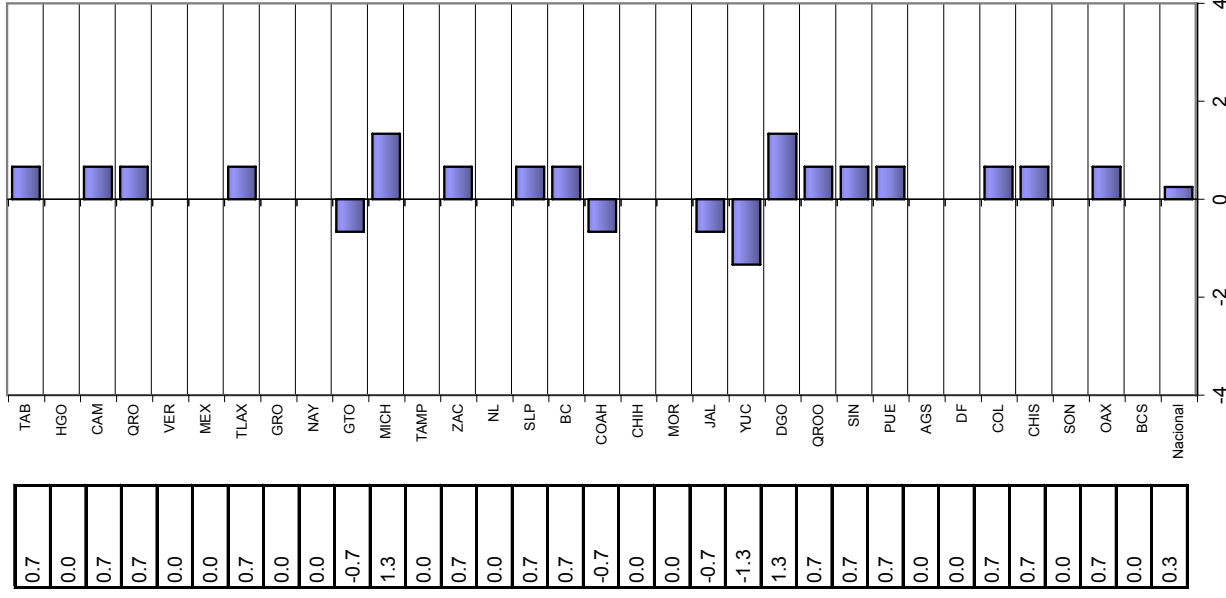


Vector diferencia entre cierre2003 y cierre2004

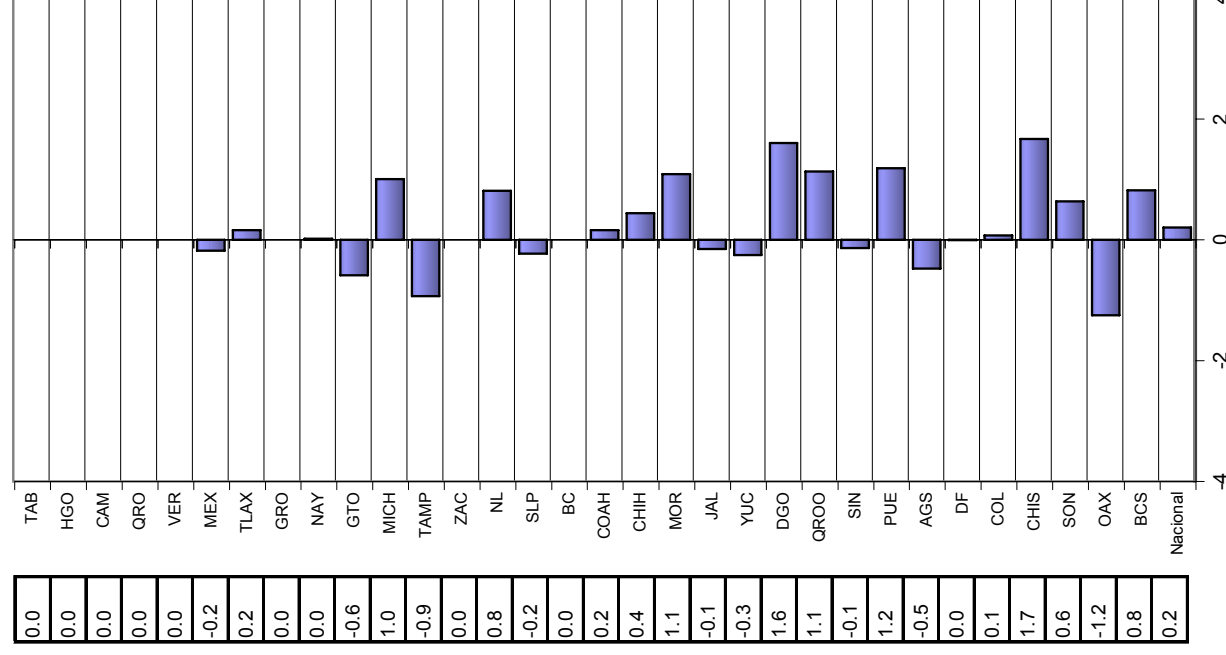
Y	1	2	3	Magnitud
TAB	8.0	0.0	16.0	17.9
HGO	0.0	0.0	0.0	0.0
CAM	8.0	0.0	-8.0	11.3
QRO	8.0	0.0	-8.0	11.3
VER	0.0	0.0	-8.0	8.0
MEX	0.0	-2.2	-8.0	8.3
TLAX	8.0	1.9	0.0	8.2
GRO	0.0	0.0	-16.0	16.0
NAY	0.0	0.2	16.0	16.0
GTO	-8.0	-7.1	16.0	19.2
MICH	16.0	12.0	8.0	21.6
TAMP	0.0	-11.2	0.0	11.2
ZAC	8.0	0.0	-16.0	17.9
NL	0.0	9.7	-8.0	12.6
SLP	8.0	-2.7	-8.0	11.6
BC	8.0	0.0	8.0	11.3
COAH	-8.0	1.9	-24.0	25.4
CHIH	0.0	5.3	0.0	5.3
MOR	0.0	13.0	8.0	15.3
JAL	-8.0	-1.8	-16.0	18.0
YUC	-16.0	-3.0	-16.0	22.8
DGO	16.0	19.2	0.0	25.0
QROO	8.0	13.6	-8.0	17.7
SIN	8.0	-1.7	0.0	8.2
PUE	8.0	14.2	8.0	18.2
AGS	0.0	-5.7	8.0	9.8
DF	0.0	-0.1	-8.0	8.0
COL	8.0	0.9	-8.0	11.3
CHIS	8.0	20.0	0.0	21.5
SON	0.0	7.6	0.0	7.6
OAX	8.0	-15.0	8.0	18.8
BCS	0.0	9.9	0.0	9.9
Nacional	3.0	2.5	-2.0	4.4

# Velocidad de cambio de los componentes del RHOVE para el periodo cierre2003 - cierre2004

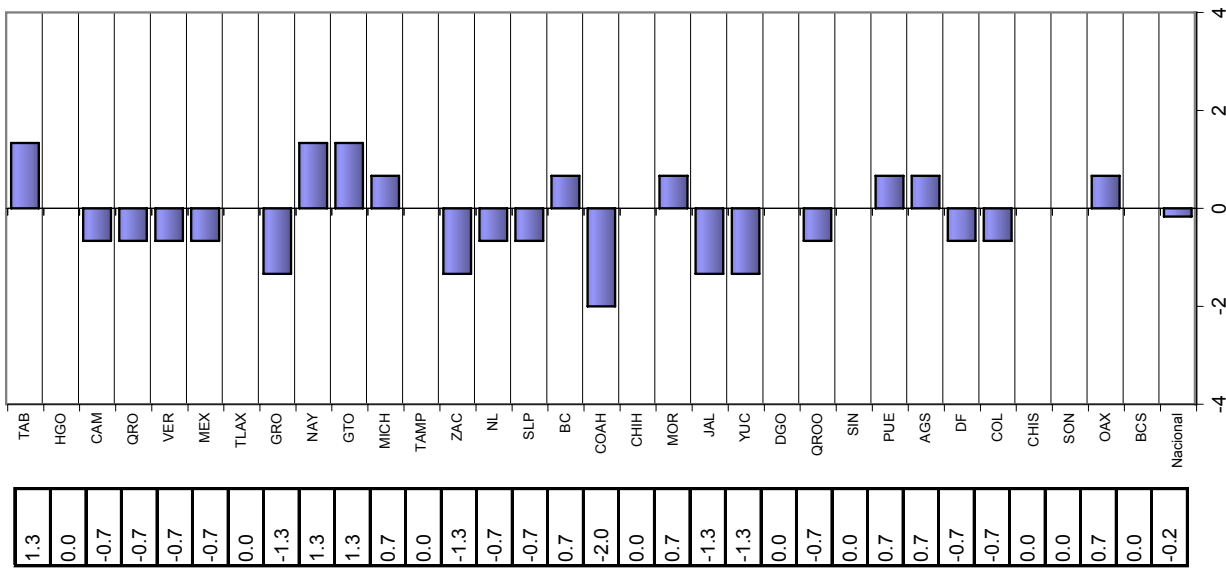
OPORTUNIDAD



CONSISTENCIA



NOTIFICACION DE BROTES



## DEFINICION DE INDICADORES QUE INTEGRAN LA EVALUACION DEL RHOVE

1. Oportunidad: Frecuencia con la que se envía la información mensual de casos en forma oportuna
2. Consistencia:  $\text{Número de casos de IN notificados en el semestre} \times 100 / \text{Número total de casos de IN notificados en el mismo semestre del año previo}$
3. Notificación de brotes: Frecuencia con que se envió la información de brotes de IN en forma oportuna