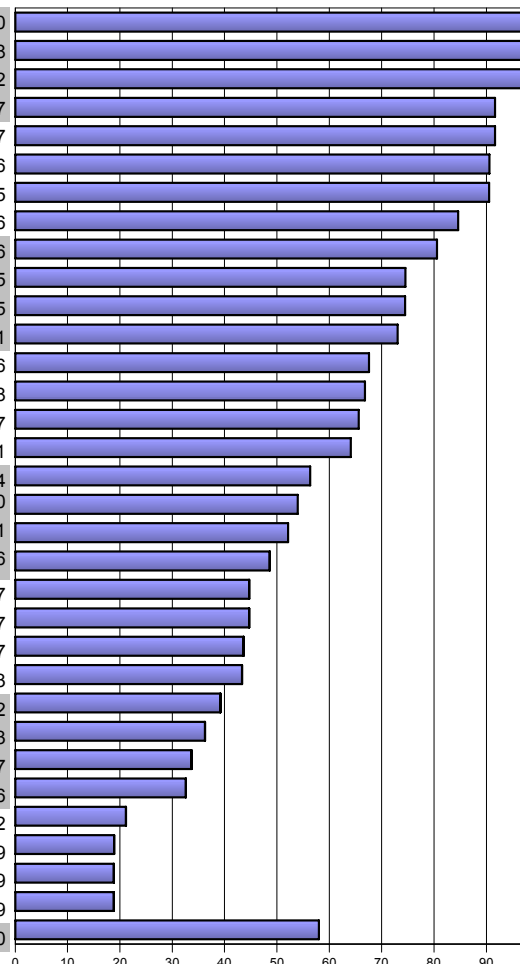


## Caminando a la Excelencia

Informe

cierre 2003

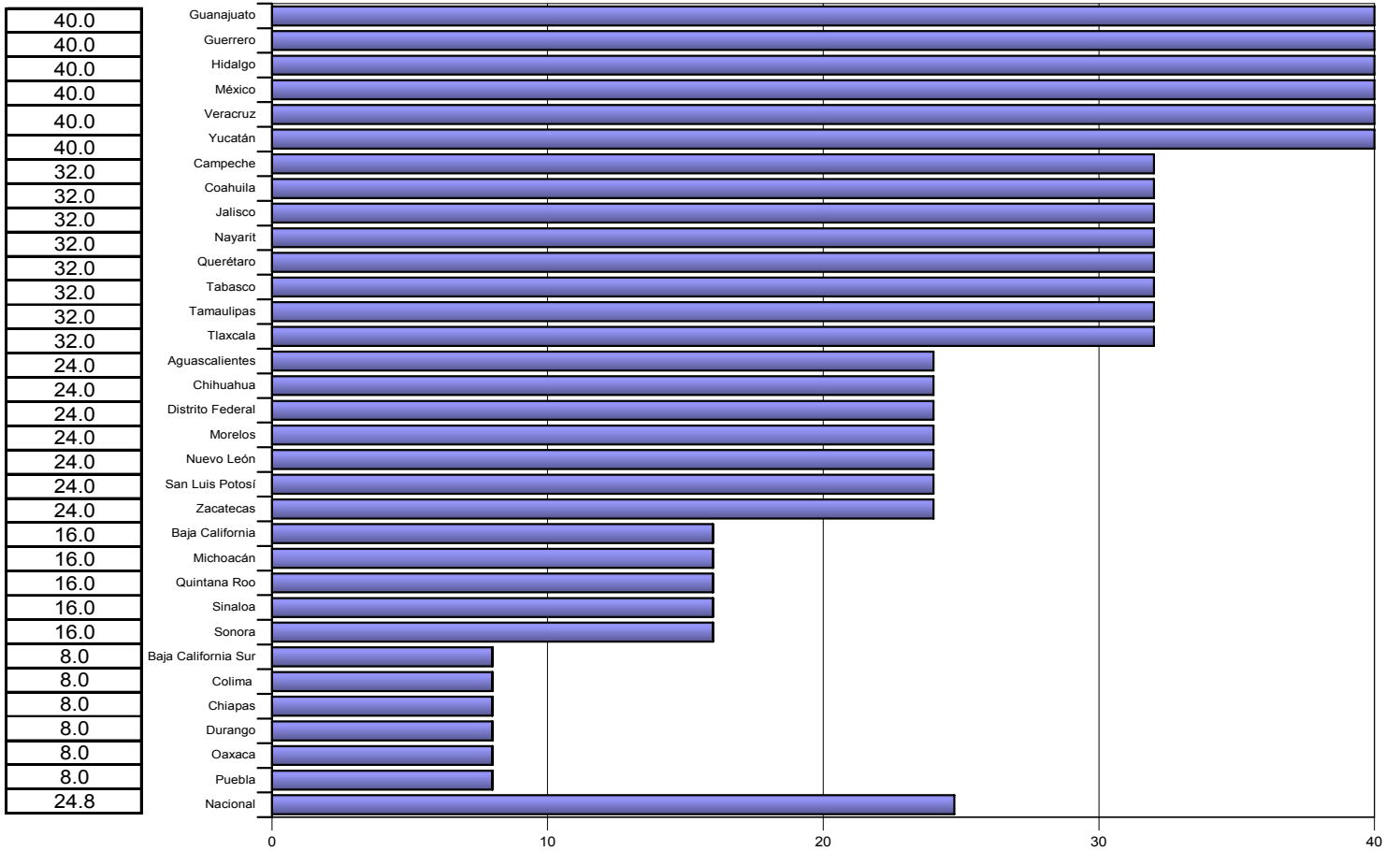
LUGAR	ENTIDAD	OPORTUNIDAD	CONSISTENCIA	NOTIFICACION DE BROTES	MAGNITUD VECTORIAL	INDICE DE EVALUACION
1	Veracruz	40.0	20.0	40.0	60.0	100.0
2	Hidalgo	40.0	19.6	40.0	59.9	99.8
3	México	40.0	14.3	40.0	58.3	97.2
4	Campeche	32.0	20.0	40.0	55.0	91.7
5	Querétaro	32.0	20.0	40.0	55.0	91.7
6	Yucatán	40.0	18.1	32.0	54.3	90.6
7	Coahuila	32.0	18.1	40.0	54.3	90.5
8	Guerrero	40.0	20.0	24.0	50.8	84.6
9	Jalisco	32.0	17.0	32.0	48.3	80.6
10	Tabasco	32.0	20.0	24.0	44.7	74.5
11	Tamaulipas	32.0	19.9	24.0	44.7	74.5
12	Guanajuato	40.0	16.1	8.0	43.8	73.1
13	Nuevo León	24.0	6.6	32.0	40.5	67.6
14	Tlaxcala	32.0	18.1	16.0	40.1	66.8
15	Zacatecas	24.0	20.0	24.0	39.4	65.7
16	Nayarit	32.0	19.8	8.0	38.4	64.1
17	San Luis Potosí	24.0	17.7	16.0	33.8	56.4
18	Chihuahua	24.0	14.7	16.0	32.4	54.0
19	Distrito Federal	24.0	12.1	16.0	31.3	52.1
20	Aguascalientes	24.0	14.5	8.0	29.2	48.6
21	Baja California	16.0	20.0	8.0	26.8	44.7
22	Sinaloa	16.0	20.0	8.0	26.8	44.7
23	Colima	8.0	19.1	16.0	26.2	43.7
24	Morelos	24.0	6.0	8.0	26.0	43.3
25	Quintana Roo	16.0	6.4	16.0	23.5	39.2
26	Sonora	16.0	12.4	8.0	21.8	36.3
27	Oaxaca	8.0	16.8	8.0	20.2	33.7
28	Michoacán	16.0	8.0	8.0	19.6	32.6
29	Puebla	8.0	5.8	8.0	12.7	21.2
30	Durango	8.0	0.8	8.0	11.3	18.9
31	Baja California Sur	8.0	0.0	8.0	11.3	18.9
32	Chiapas	8.0	0.0	8.0	11.3	18.9
	Nacional	24.8	14.4	19.8	34.8	58.0



Categoría	Intervalo	Gradiente de evaluación
Sobresaliente	> 90.0	
Satisfactorio	80.0-90.0	
Mínimo	60.0-79.9	
Precario	< 60.0	

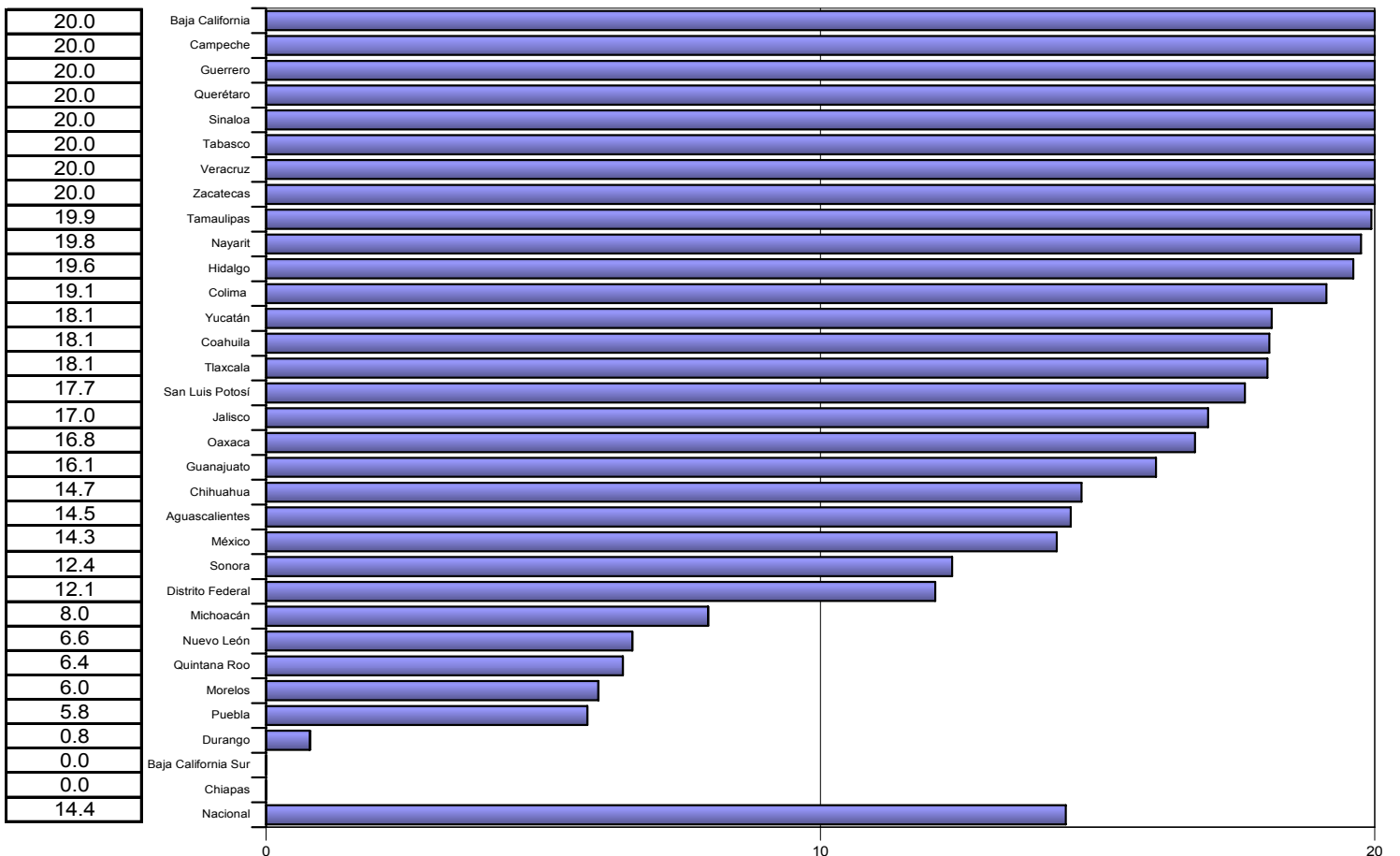
# OPORTUNIDAD

INDICE DE EVALUACION



# CONSISTENCIA

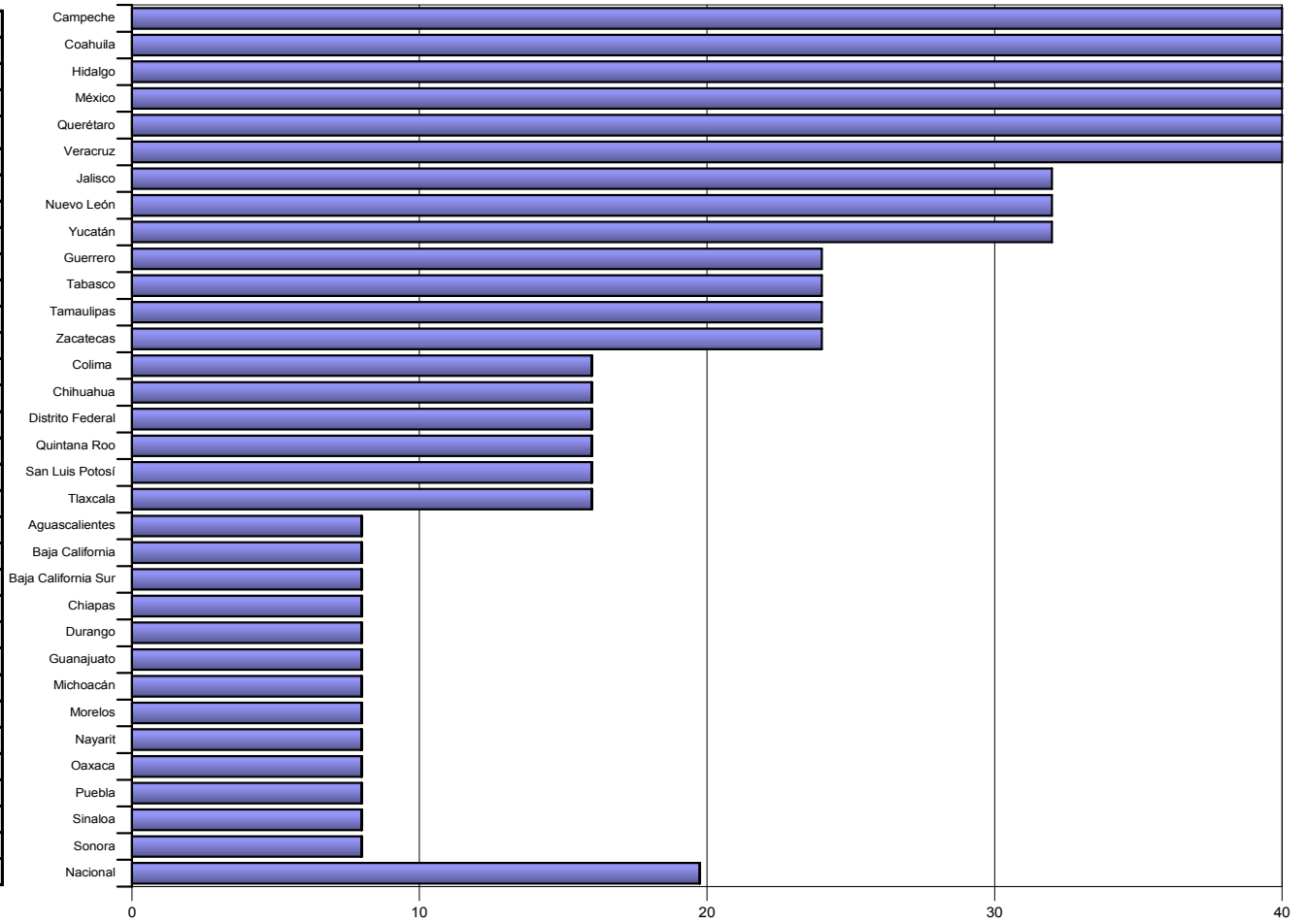
INDICE DE EVALUACION

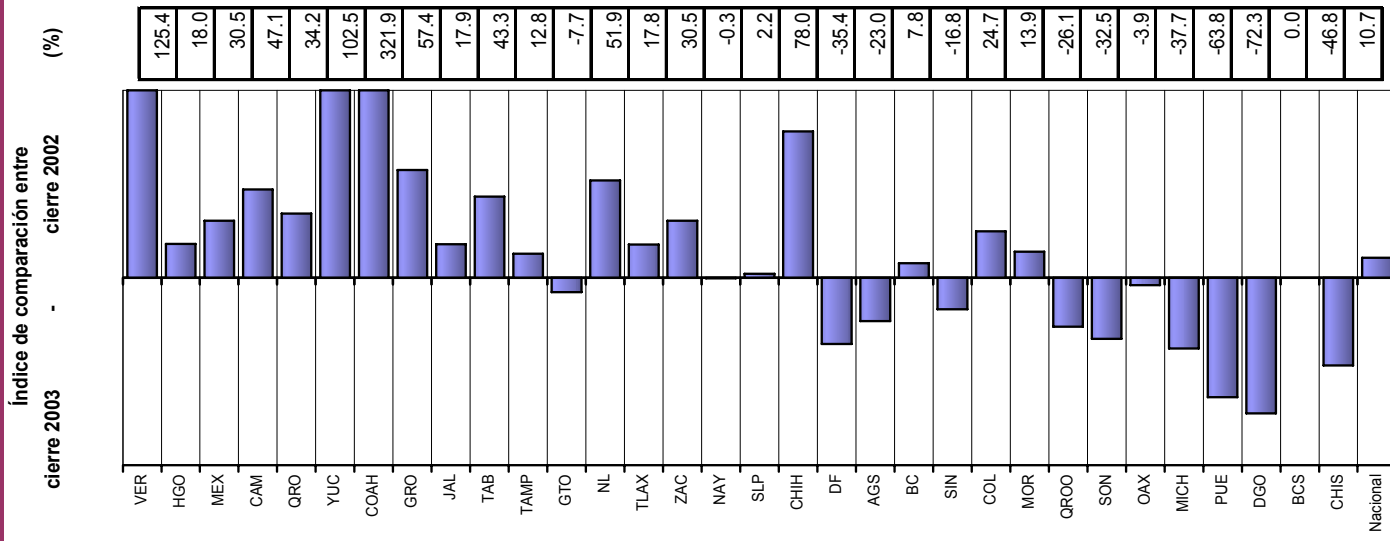
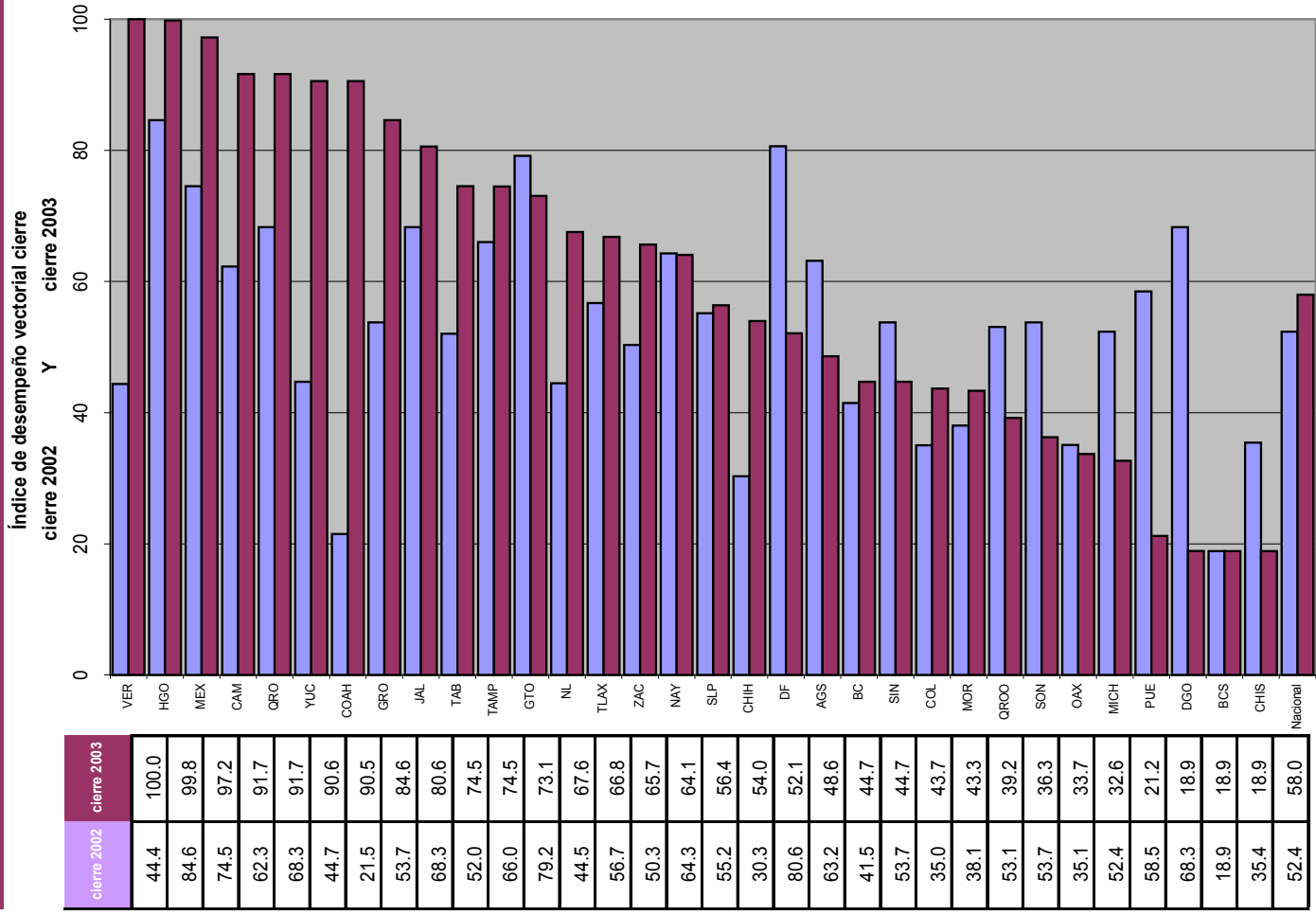


# NOTIFICACION DE BROTES

INDICE DE EVALUACION

40.0
40.0
40.0
40.0
40.0
40.0
32.0
32.0
32.0
24.0
24.0
24.0
24.0
16.0
16.0
16.0
16.0
16.0
16.0
8.0
8.0
8.0
8.0
8.0
8.0
8.0
8.0
8.0
8.0
8.0
8.0
8.0
8.0
8.0
19.8





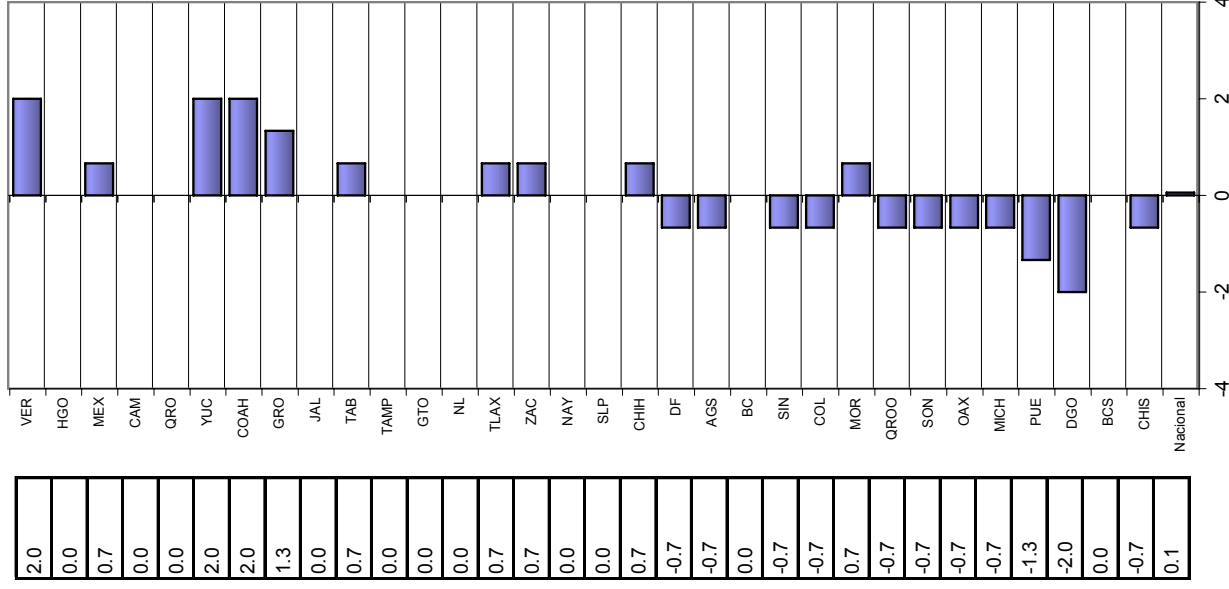
**Vector diferencia entre cierre 2002**

Estado	1	2	3	Magnitud
VER	24.0	6.0	24.0	34.5
HGO	0.0	-0.4	16.0	16.0
MEX	8.0	-5.7	16.0	18.8
CAM	0.0	2.4	32.0	32.1
QRO	0.0	0.0	24.0	24.0
YUC	24.0	-1.9	24.0	34.0
COAH	24.0	11.9	32.0	41.7
GRO	16.0	0.0	16.0	22.6
JAL	0.0	-3.0	16.0	16.3
TAB	8.0	1.7	16.0	18.0
TAMP	0.0	2.9	8.0	8.5
GTO	0.0	-3.9	-8.0	8.9
NL	0.0	-1.9	24.0	24.1
TLAX	8.0	0.0	0.0	8.0
ZAC	8.0	0.0	8.0	11.3
NAY	0.0	-0.2	0.0	0.2
SLP	0.0	1.4	0.0	1.4
CHIH	8.0	11.4	8.0	16.1
DF	-8.0	-5.0	-16.0	18.6
AGS	-8.0	-4.1	0.0	9.0
BC	0.0	9.6	-8.0	12.5
SIN	-8.0	0.0	0.0	8.0
COL	-8.0	8.1	8.0	13.9
MOR	8.0	-8.2	0.0	11.5
QROO	-8.0	-12.9	8.0	17.2
SON	-8.0	-7.6	0.0	11.0
OAX	-8.0	5.7	0.0	9.8
MICH	-8.0	-4.5	-8.0	12.2
PUE	-16.0	-14.2	-8.0	22.8
DGO	-24.0	-19.2	-8.0	31.8
BCS	0.0	0.0	0.0	0.0
CHIS	-8.0	-11.5	0.0	14.0
Nacional	0.8	-1.3	7.0	7.2

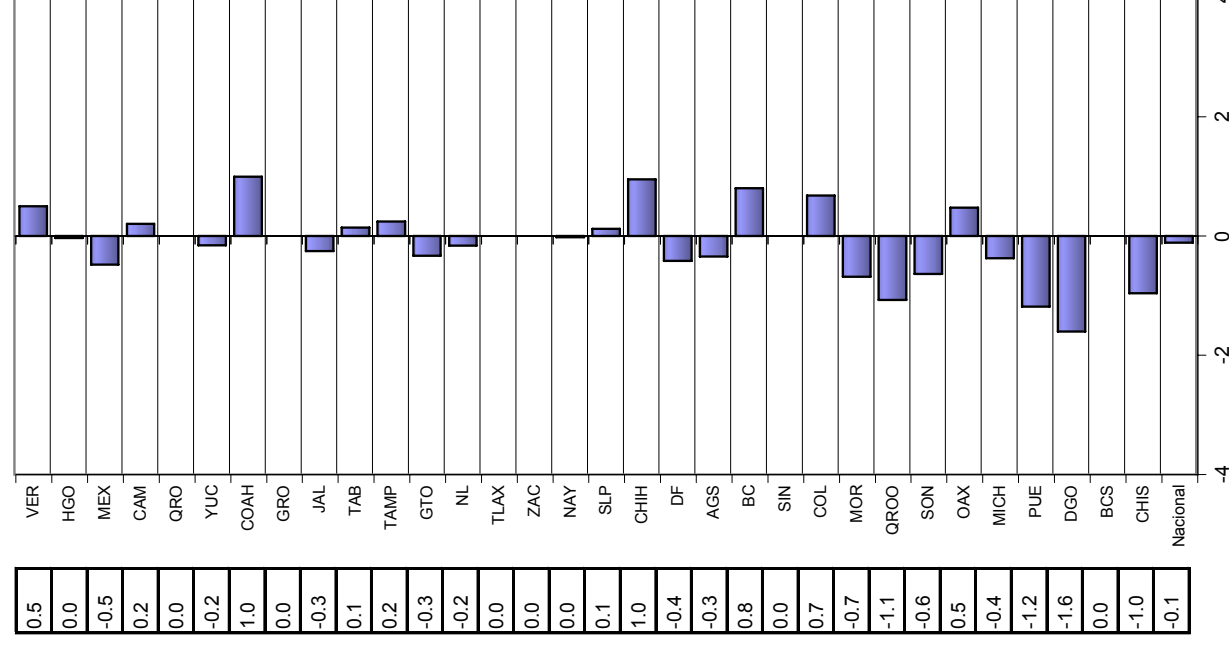
INDICADORES

# Velocidad de cambio de los componentes del RHOVE - cierre 2002 - cierre 2003

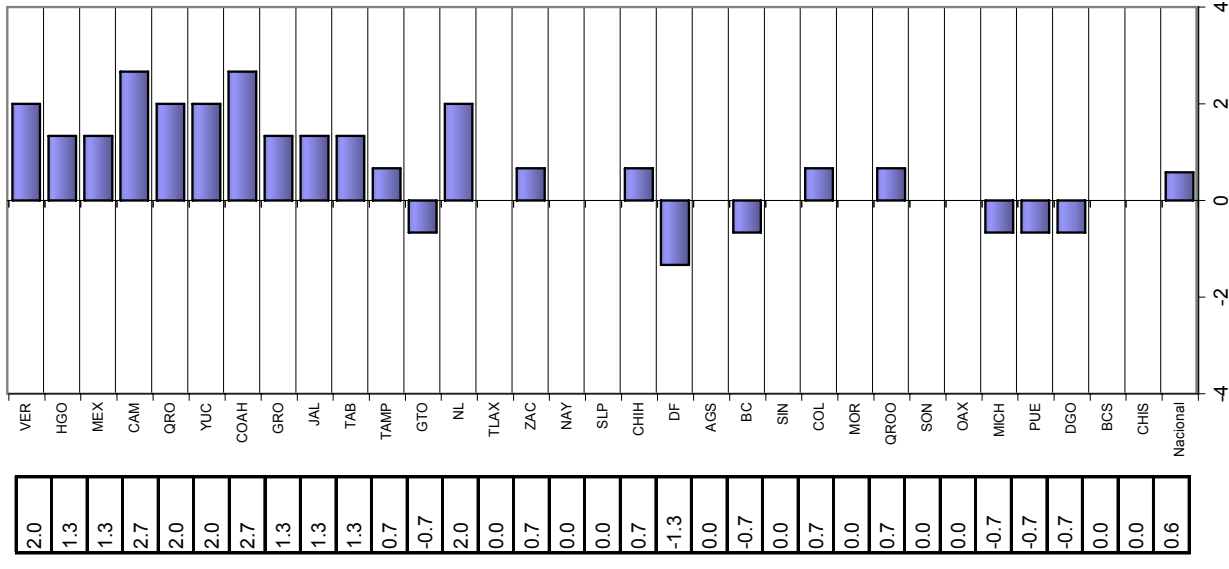
OPORTUNIDAD



CONSISTENCIA



NOTIFICACION DE BROTES



## DEFINICION DE INDICADORES QUE INTEGRAN LA EVALUACION DEL RHOVE

1. Oportunidad: Frecuencia con la que se envía la información mensual de casos en forma oportuna

2. Consistencia:  $\text{Número de casos de IN notificados en el semestre} \times 100 / \text{Número total de casos de IN notificados en el mismo semestre del año previo}$

3. Notificación de brotes: Frecuencia con que se envió la información de brotes de IN en forma oportuna