



Epidemiología

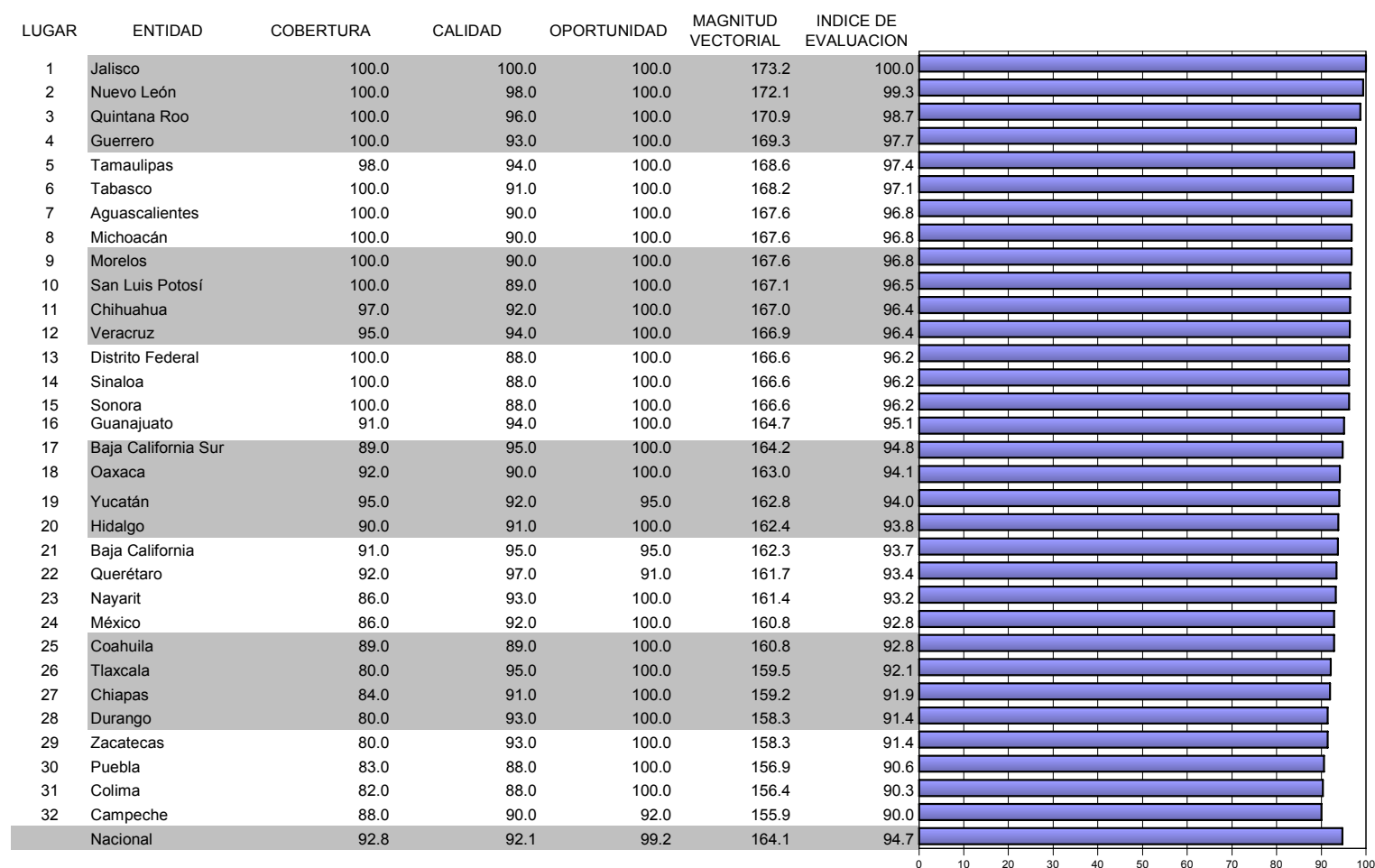
RHNM



Caminando a la Excelencia

Informe

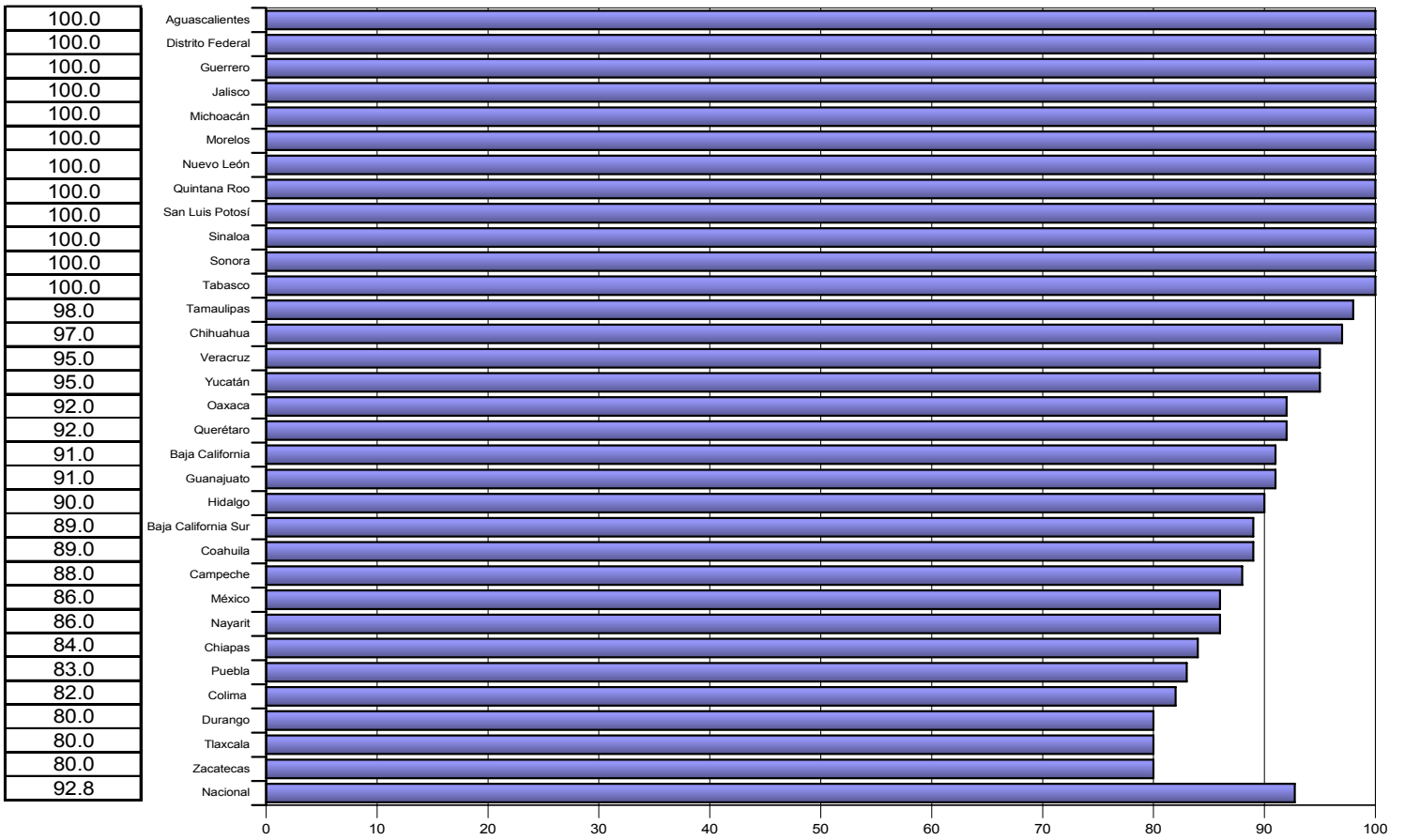
cierre 2003



Categoría	Intervalo	Gradiente de evaluación
Sobresaliente	> 90.0	
Satisfactorio	80.0-90.0	
Mínimo	60.0-79.9	
Precario	< 60.0	

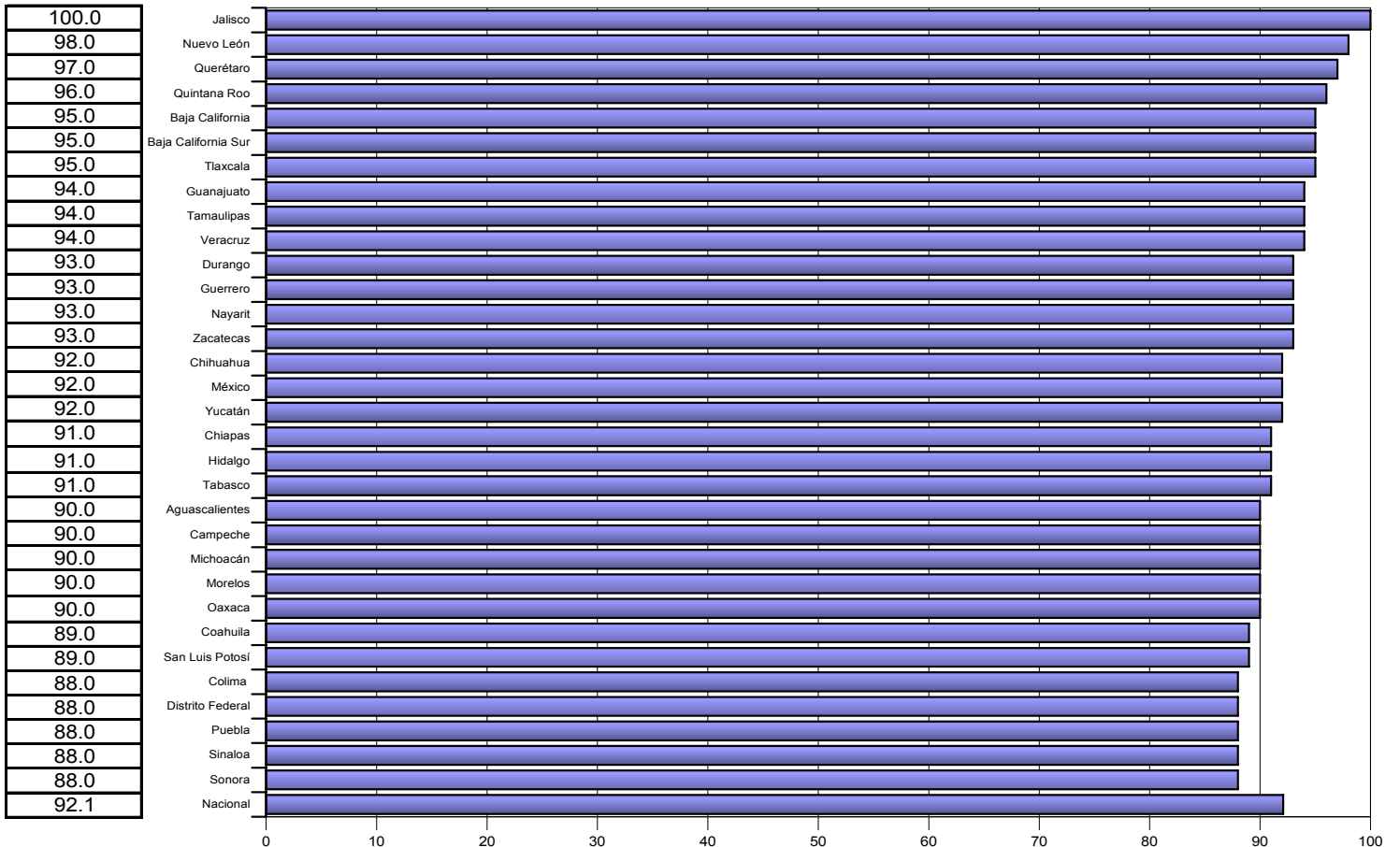
COBERTURA

INDICE DE EVALUACION



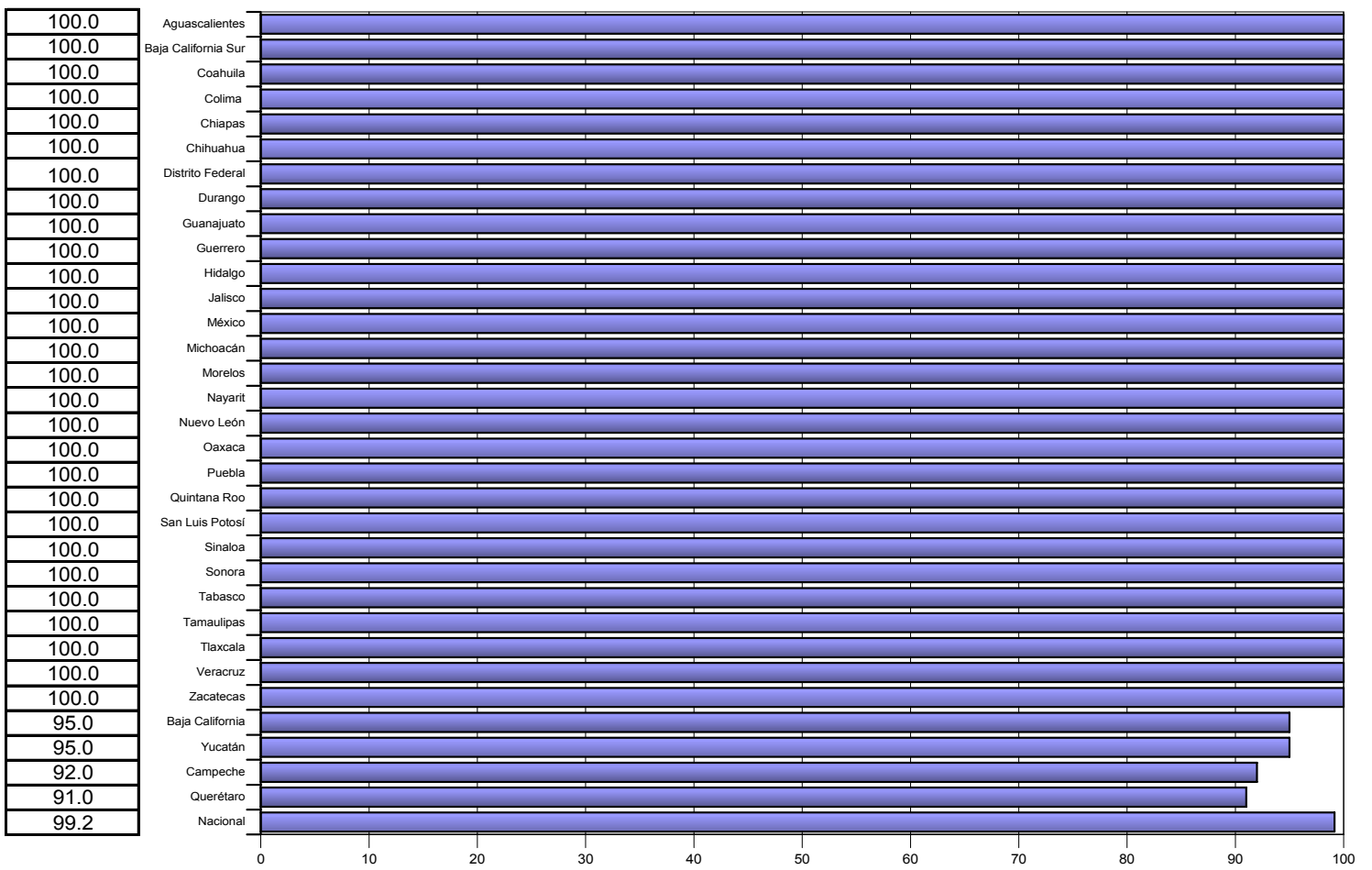
CALIDAD

INDICE DE EVALUACION

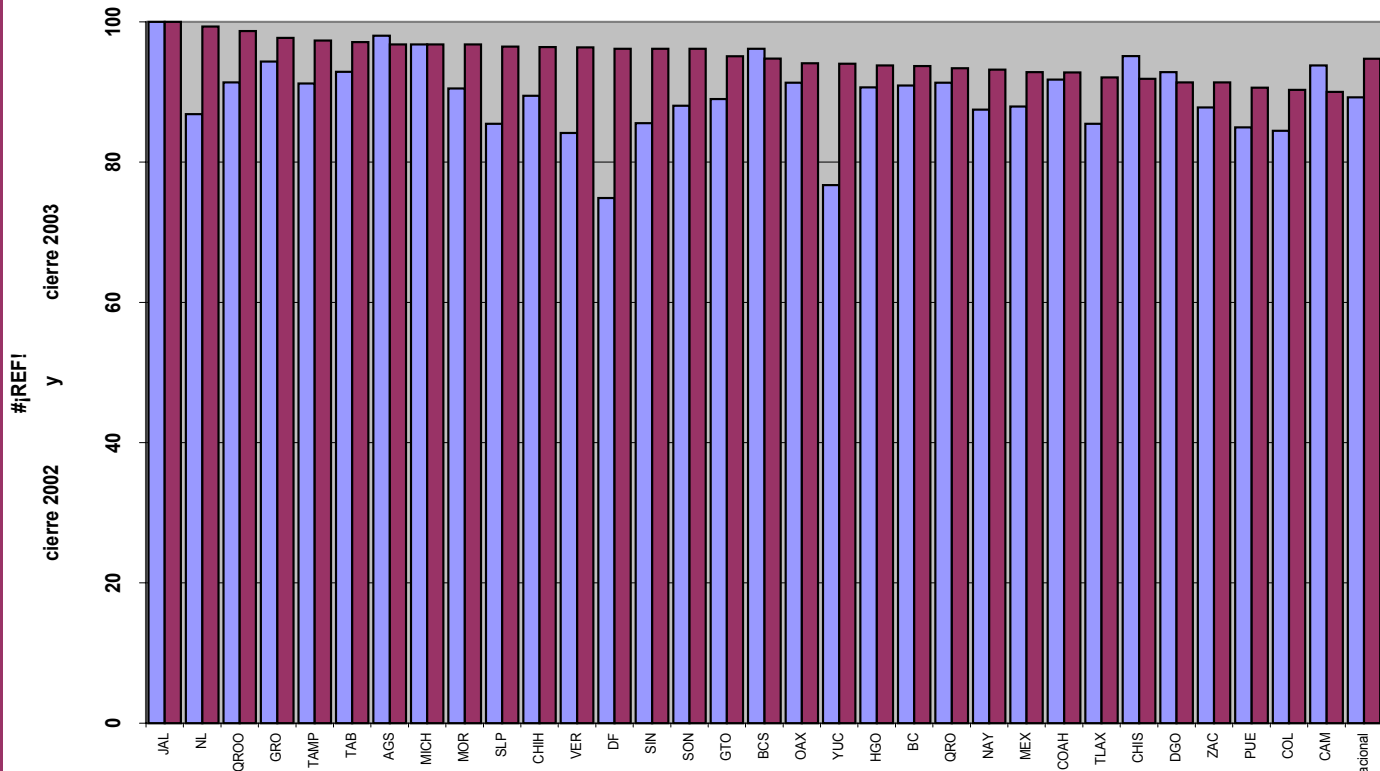
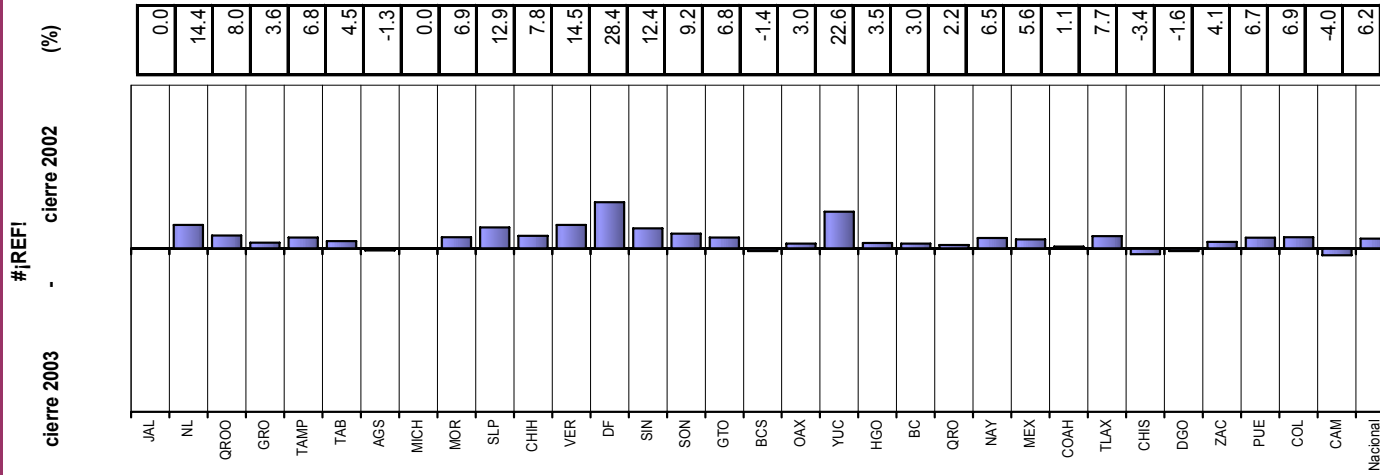


OPORTUNIDAD

INDICE DE
EVALUACION



cierre 2002	#REF!			cierre 2003	Magnitud
	1	2	3		
0.0	0.0	0.0	0.0	0.0	0.0
45.0	45.0	0.0	0.0	45.0	45.0
29.0	-4.0	-4.0	0.0	29.3	29.3
17.0	-6.0	-6.0	0.0	18.0	18.0
21.0	-1.0	-1.0	0.0	21.0	21.0
22.0	-8.0	-8.0	0.0	23.4	23.4
5.0	-9.0	-9.0	0.0	10.3	10.3
10.0	-10.0	-10.0	0.0	14.1	14.1
23.0	-3.0	-3.0	0.0	23.2	23.2
52.0	-10.0	-10.0	1.0	53.0	53.0
19.0	3.0	3.0	0.0	19.2	19.2
44.0	1.0	1.0	0.0	44.0	44.0
66.0	-3.0	-3.0	14.0	67.5	67.5
12.0	-3.0	-3.0	23.0	26.1	26.1
27.0	-1.0	-1.0	0.0	27.0	27.0
17.0	3.0	3.0	0.0	17.3	17.3
1.0	-5.0	-5.0	0.0	5.1	5.1
11.0	-2.0	-2.0	0.0	11.2	11.2
30.0	2.0	2.0	22.0	37.3	37.3
15.0	-4.0	-4.0	0.0	15.5	15.5
8.0	-5.0	-5.0	6.0	11.2	11.2
11.0	5.0	5.0	-9.0	15.1	15.1
19.0	1.0	1.0	0.0	19.0	19.0
13.0	-3.0	-3.0	6.0	14.6	14.6
10.0	-6.0	-6.0	0.0	11.7	11.7
30.0	-2.0	-2.0	0.0	30.1	30.1
-4.0	-6.0	-6.0	0.0	7.2	7.2
-6.0	1.0	1.0	0.0	6.1	6.1
13.0	-2.0	-2.0	2.0	13.3	13.3
25.0	-3.0	-3.0	0.0	25.2	25.2
18.0	-8.0	-8.0	10.0	22.1	22.1
-12.0	-3.0	-3.0	4.0	13.0	13.0
18.5	-2.8	-2.8	2.5	18.8	18.8



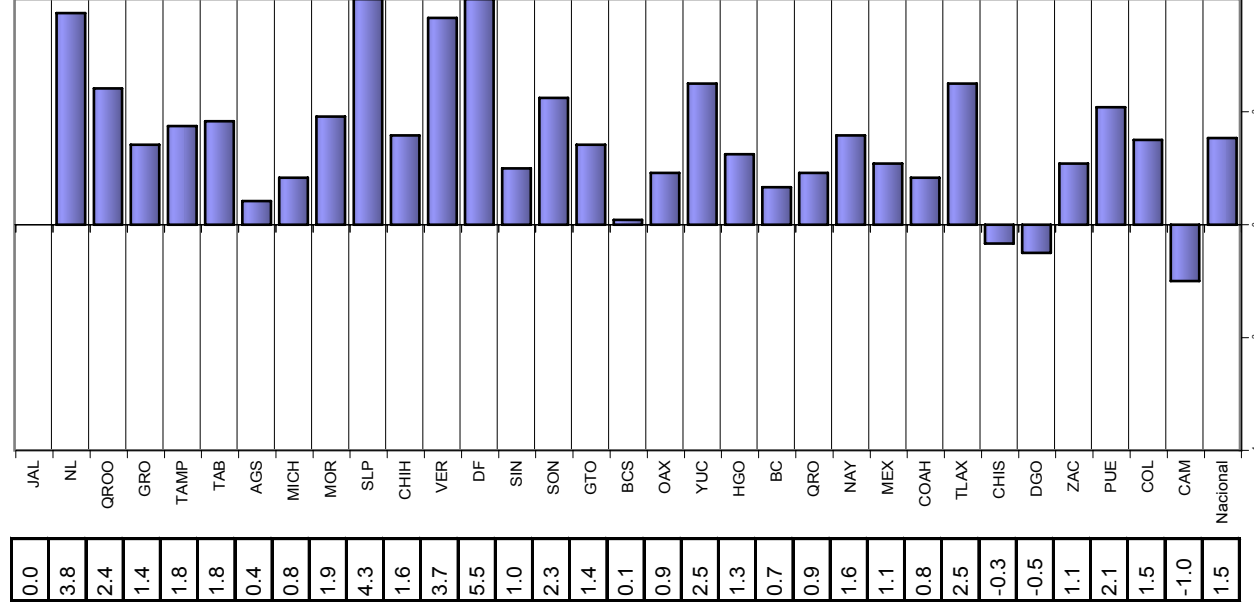
INDICADORES

1.COBERTURA 2.CALIDAD 3.OPORTUNIDAD

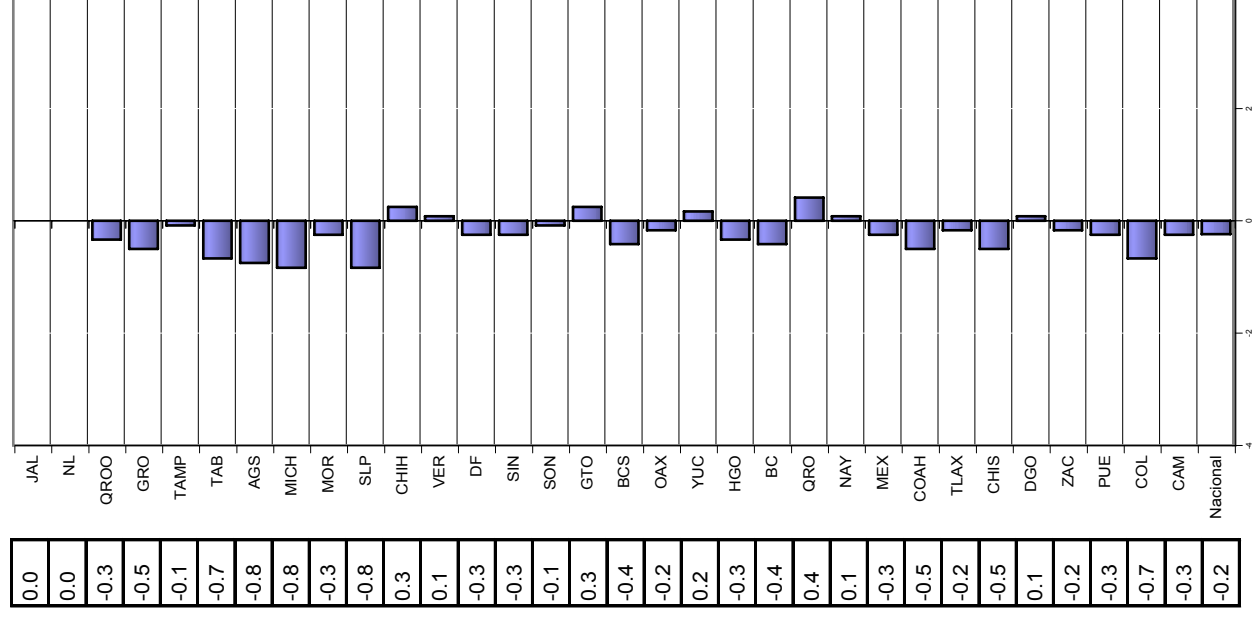
Velocidad de cambio de los componentes de los Programas de RHNIM para el periodo cierre 2002

cierre 2003

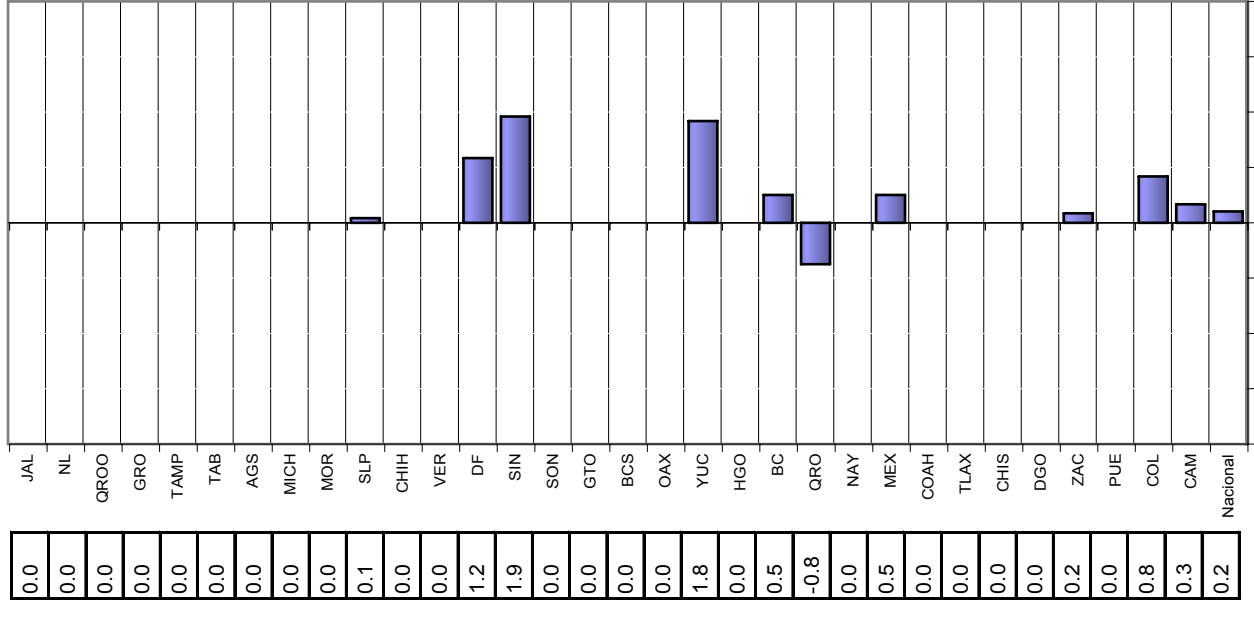
COBERTURA



CALIDAD



CUMPLIMIENTO



DEFINICION DE INDICADORES QUE INTEGRAN LA EVALUACION DE RHNM

1. Cobertura: Número de unidades de diagnóstico que opera en el sistema / total de unidades de diagnóstico existentes

2. Oportunidad: Número de informes recibidos dentro del periodo establecido / total de informes recibidos

3. Calidad: Número de informes recibidos con el registro de todas las variables y sin error / total de informes recibidos