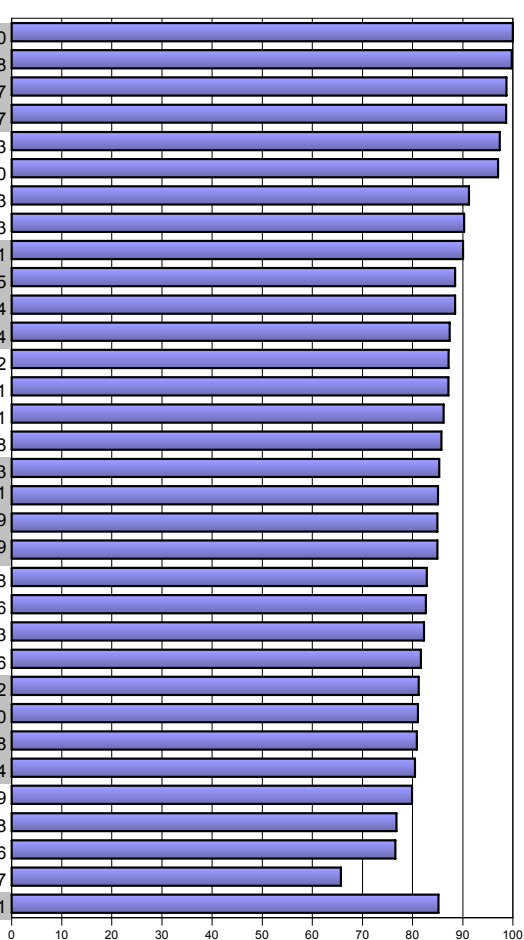


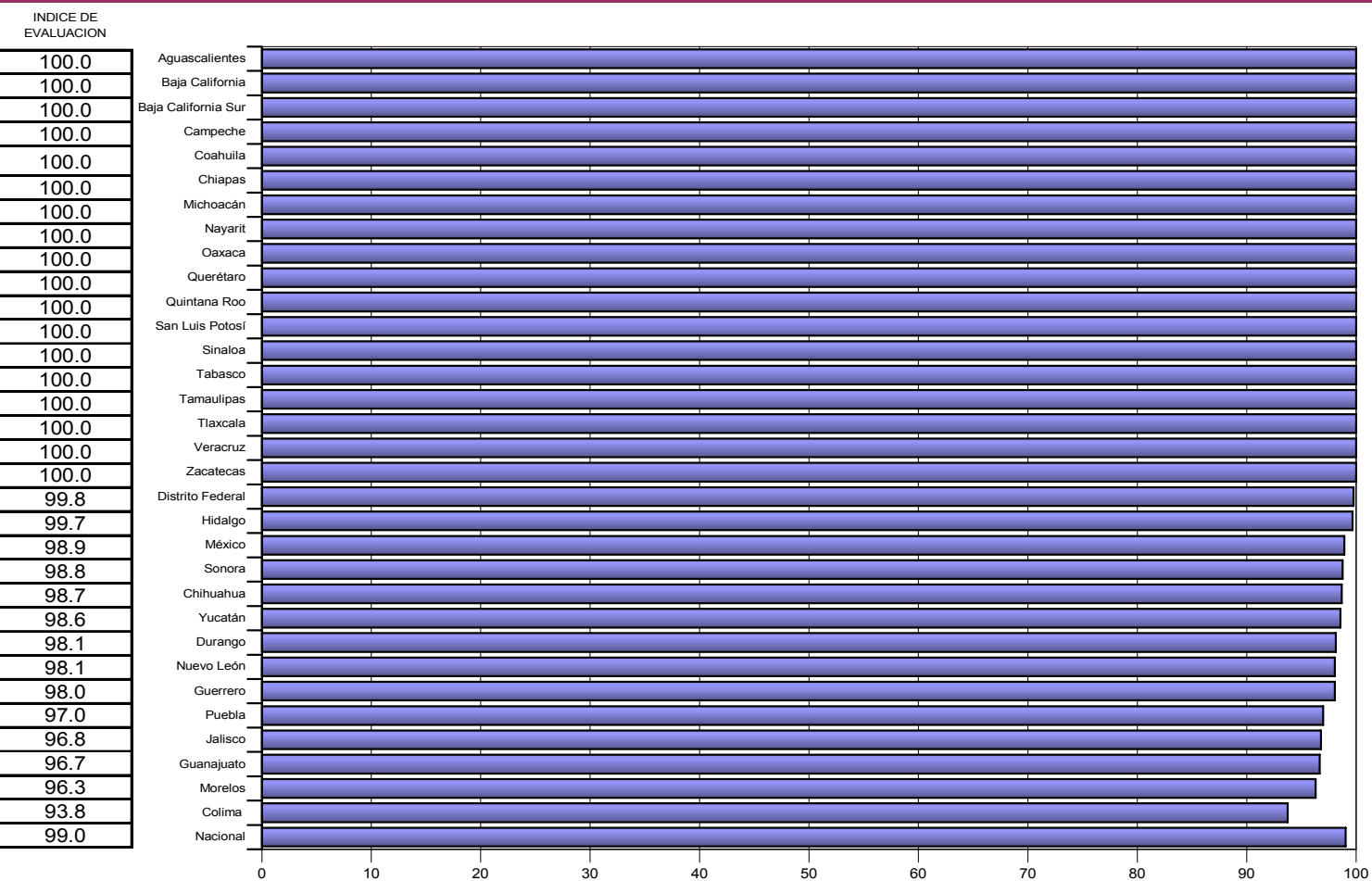
Caminando a la Excelencia Informe cierre 2003

LUGAR	ENTIDAD	ESTUDIO OPORTUNO	MUESTRAS ADECUADAS	NOTIFICACION	MAGNITUD VECTORIAL	INDICE DE EVALUACION
1	Nayarit	100.0	100.0	100.0	173.2	100.0
2	Hidalgo	99.7	99.7	100.0	172.8	99.8
3	Zacatecas	100.0	97.3	98.8	170.9	98.7
4	Guanajuato	96.7	99.3	100.0	170.9	98.7
5	Baja California	100.0	97.5	94.4	168.6	97.3
6	Distrito Federal	99.8	97.8	93.4	168.1	97.0
7	México	98.9	94.5	79.1	158.1	91.3
8	Sonora	98.8	100.0	68.5	156.3	90.3
9	Durango	98.1	100.0	68.6	156.0	90.1
10	Yucatán	98.6	85.7	80.1	153.2	88.5
11	Aguaascalientes	100.0	89.7	73.5	153.2	88.4
12	San Luis Potosí	100.0	100.0	53.9	151.4	87.4
13	Veracruz	100.0	91.0	67.3	151.0	87.2
14	Tabasco	100.0	95.2	61.0	150.9	87.1
15	Querétaro	100.0	100.0	47.6	149.2	86.1
16	Campeche	100.0	100.0	45.4	148.5	85.8
17	Colima	93.8	100.0	55.2	147.8	85.3
18	Coahuila	100.0	98.2	45.4	147.3	85.1
19	Chihuahua	98.7	98.7	46.6	147.1	84.9
20	Nuevo León	98.1	97.1	51.0	147.1	84.9
21	Guerrero	98.0	100.0	30.8	143.4	82.8
22	Michoacán	100.0	97.2	32.2	143.1	82.6
23	Morelos	96.3	100.0	32.1	142.5	82.3
24	Oaxaca	100.0	73.6	67.6	141.4	81.6
25	Puebla	97.0	94.9	36.8	140.6	81.2
26	Tamaulipas	100.0	93.3	31.5	140.4	81.0
27	Jalisco	96.8	94.4	36.6	140.0	80.8
28	Sinaloa	100.0	95.5	17.4	139.3	80.4
29	Tlaxcala	100.0	92.3	24.9	138.4	79.9
30	Chiapas	100.0	87.0	10.9	133.0	76.8
31	Quintana Roo	100.0	85.7	15.8	132.6	76.6
32	Baja California Sur	100.0	42.9	33.2	113.7	65.7
	Nacional	99.0	93.7	56.2	147.5	85.1



Categoría	Intervalo	Gradiente de evaluación
Sobresaliente	> 90.0	Verde
Satisfactorio	80.0-90.0	Amarillo
Mínimo	60.0-79.9	Rojo
Precario	< 60.0	Negro

ESTUDIO OPORTUNO

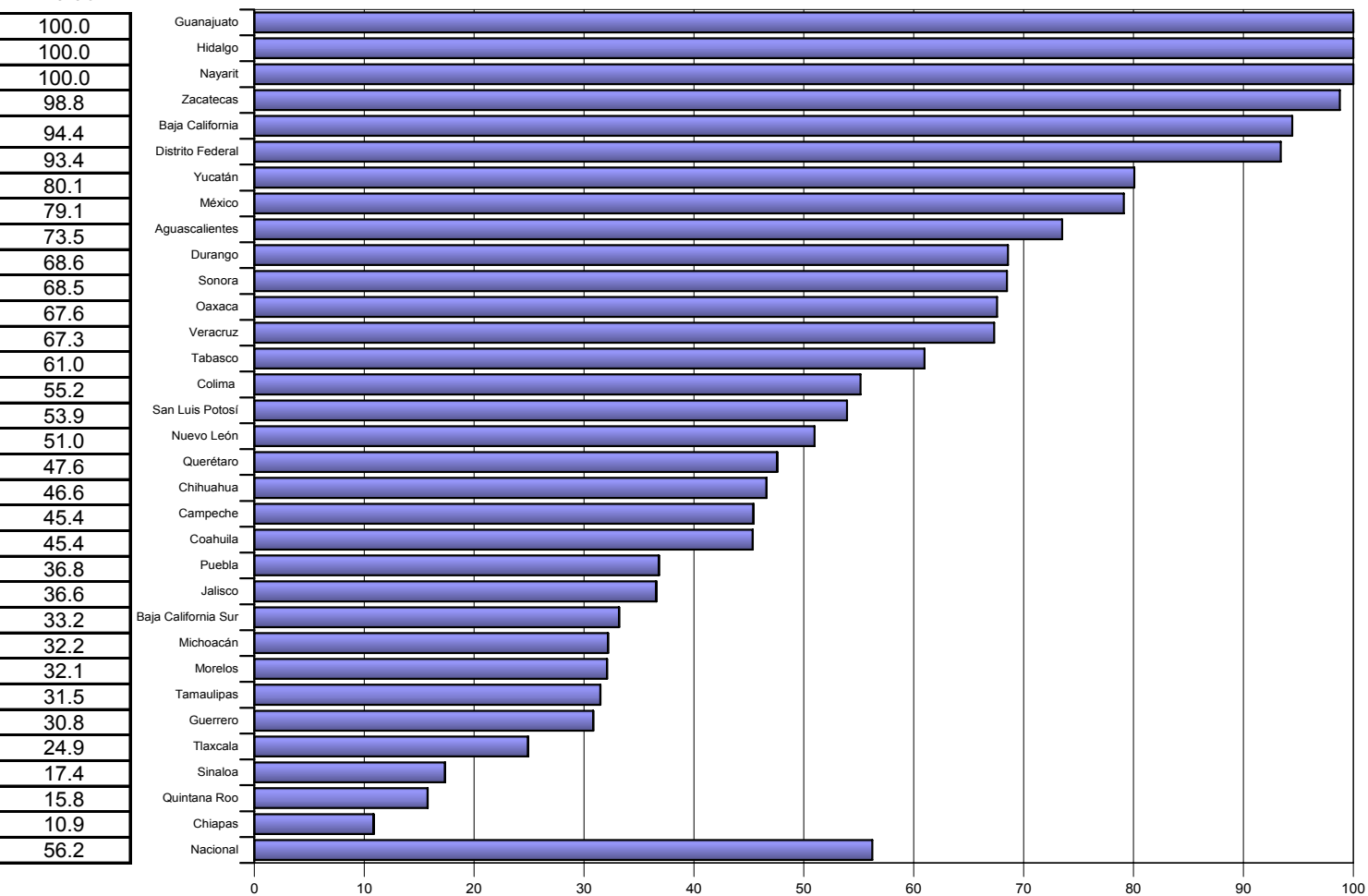


MUESTRAS ADECUADAS



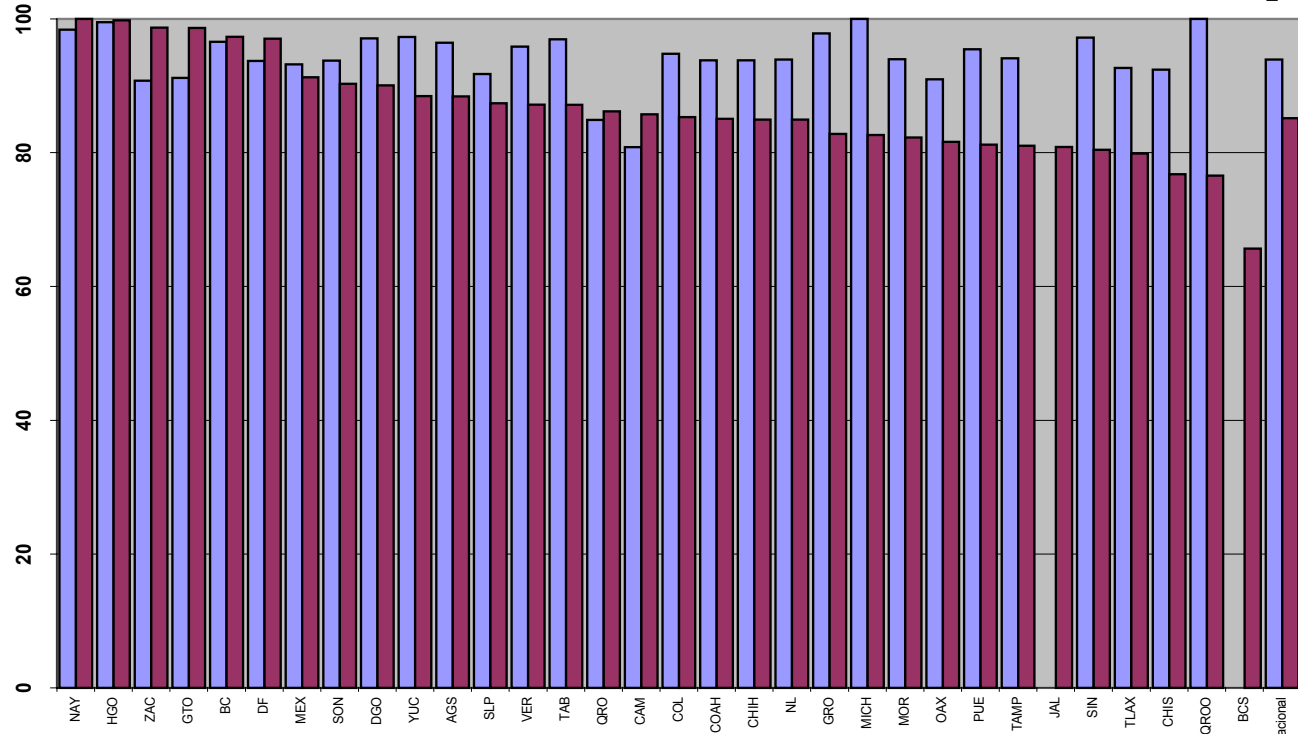
NOTIFICACION

INDICE DE
EVALUACION

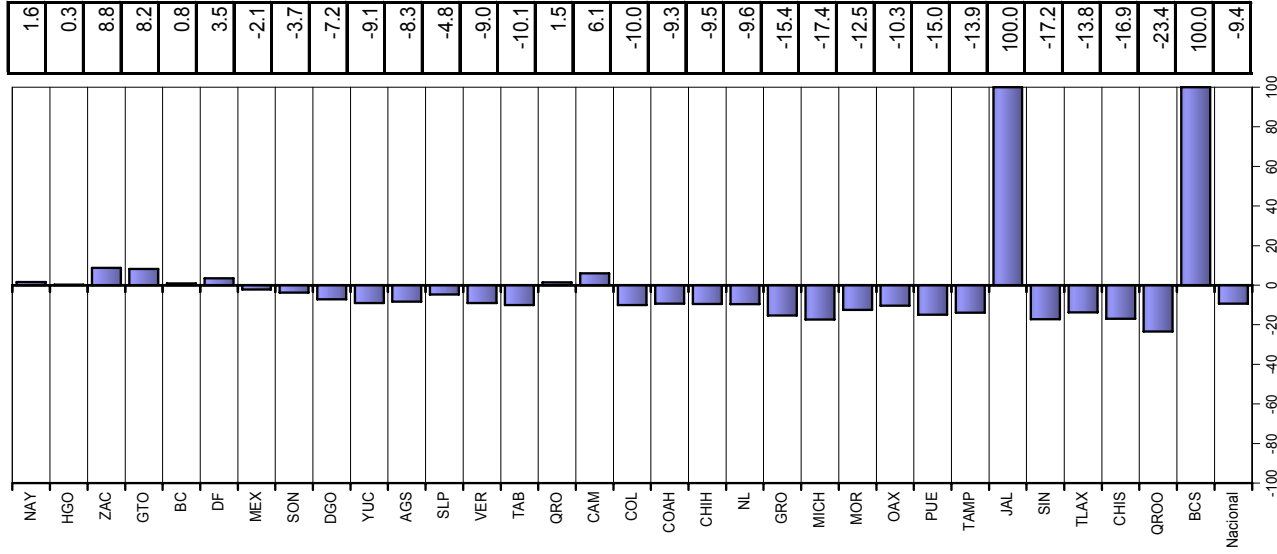


Índice de desempeño vectorial cierre 2002 y cierre 2003

cierre 2002	cierre 2003
98.4	100.0
99.5	99.8
90.7	98.7
91.2	98.7
96.6	97.3
93.7	97.0
93.2	91.3
93.8	90.3
97.1	90.1
97.3	88.5
96.4	88.4
91.8	87.4
95.9	87.2
96.9	87.1
84.9	86.1
80.8	85.8
94.8	85.3
93.8	85.1
93.8	84.9
93.9	84.9
97.8	82.8
100.0	82.6
94.0	82.3
91.0	81.6
95.5	81.2
94.1	81.0
0.0	80.8
97.2	80.4
92.7	79.9
92.4	76.8
100.0	76.6
0.0	65.7
93.9	85.1



Índice de comparación entre cierre 2003 - cierre 2002 (%)



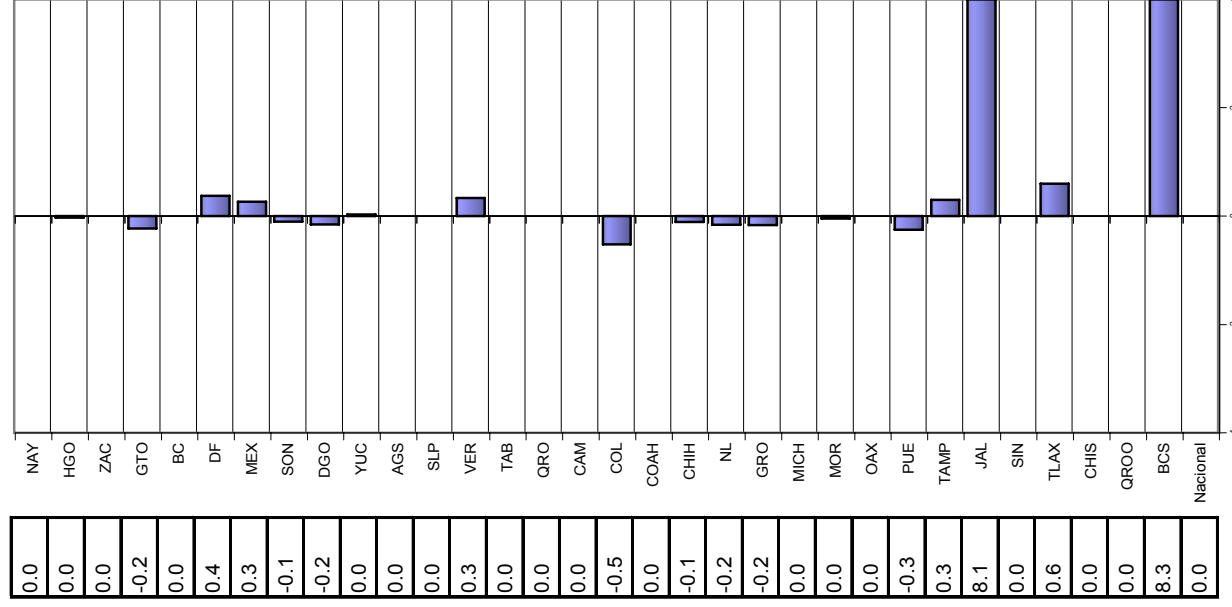
(%)

Vector diferencia entre cierre 2002 y cierre 2003

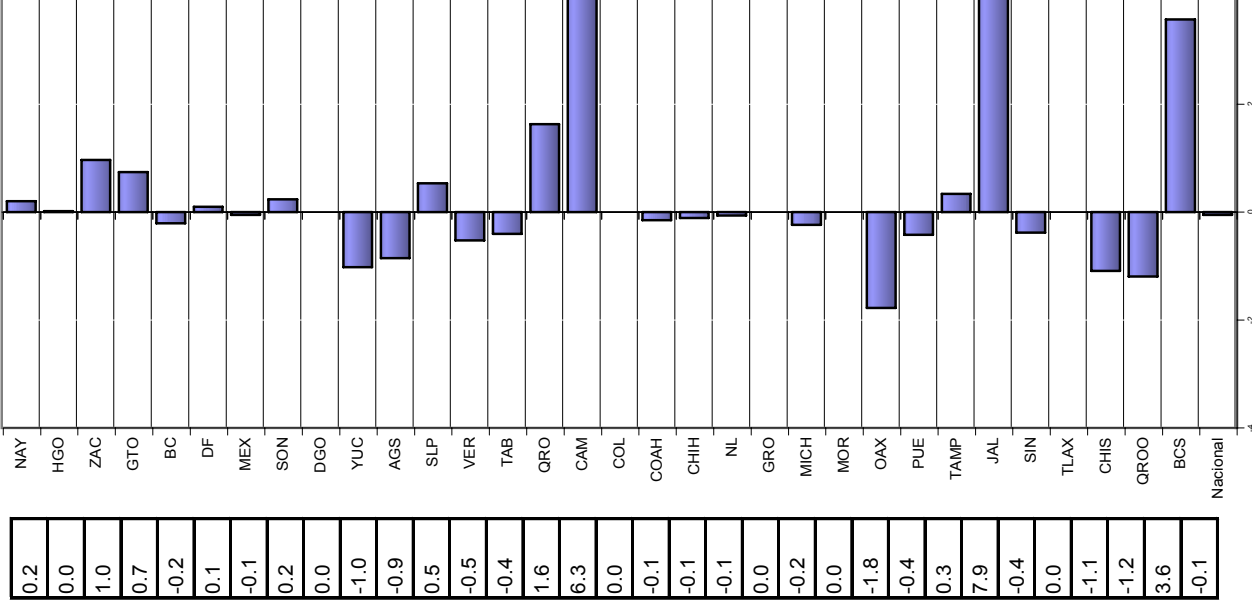
cierre 2002	1	2	3	y	cierre 2003	Magnitud
0.0	0.0	2.4	2.4	2.4	3.4	3.4
-0.3	-0.3	0.2	1.0	1.0	1.1	1.1
0.0	0.0	11.6	13.1	13.1	17.5	17.5
-2.7	-2.7	8.9	17.0	17.0	19.4	19.4
0.0	0.0	-2.5	5.1	5.1	5.7	5.7
4.4	4.4	1.2	4.3	4.3	6.3	6.3
3.2	3.2	-0.6	-9.5	-9.5	10.0	10.0
-1.3	-1.3	2.9	-14.9	-14.9	15.2	15.2
-1.9	-1.9	0.0	-22.3	-22.3	22.4	22.4
0.3	0.3	-12.2	-15.6	-15.6	19.8	19.8
0.0	0.0	-10.3	-15.4	-15.4	18.5	18.5
0.0	0.0	6.5	-26.7	-26.7	27.5	27.5
4.0	4.0	-6.3	-27.0	-27.0	28.0	28.0
0.0	0.0	-4.8	-29.5	-29.5	29.9	29.9
0.0	0.0	19.6	-24.2	-24.2	31.1	31.1
0.0	0.0	75.0	-49.3	-49.3	89.8	89.8
-6.3	-6.3	0.0	-28.2	-28.2	28.9	28.9
0.0	0.0	-1.8	-34.6	-34.6	34.7	34.7
-1.3	-1.3	-1.3	-33.4	-33.4	33.5	33.5
-1.9	-1.9	-0.8	-32.0	-32.0	32.1	32.1
-2.0	-2.0	0.0	-62.5	-62.5	62.5	62.5
0.0	0.0	-2.8	-67.8	-67.8	67.9	67.9
-0.6	-0.6	0.0	-52.3	-52.3	52.3	52.3
0.0	0.0	-21.3	-8.7	-8.7	23.0	23.0
-3.0	-3.0	-5.1	-48.9	-48.9	49.3	49.3
3.6	3.6	4.0	-64.9	-64.9	65.2	65.2
96.8	96.8	94.4	36.6	36.6	140.0	140.0
0.0	0.0	-4.5	-74.0	-74.0	74.1	74.1
7.1	7.1	0.0	-68.0	-68.0	68.3	68.3
0.0	0.0	-13.0	-64.1	-64.1	65.4	65.4
0.0	0.0	-14.3	-84.2	-84.2	85.4	85.4
100.0	100.0	42.9	33.2	33.2	113.7	113.7
0.0	0.0	-0.7	-31.9	-31.9	31.9	31.9

1. ESTUDIO OPORTUNO
2. MUESTRAS ADECUADAS
3. NOTIFICACION

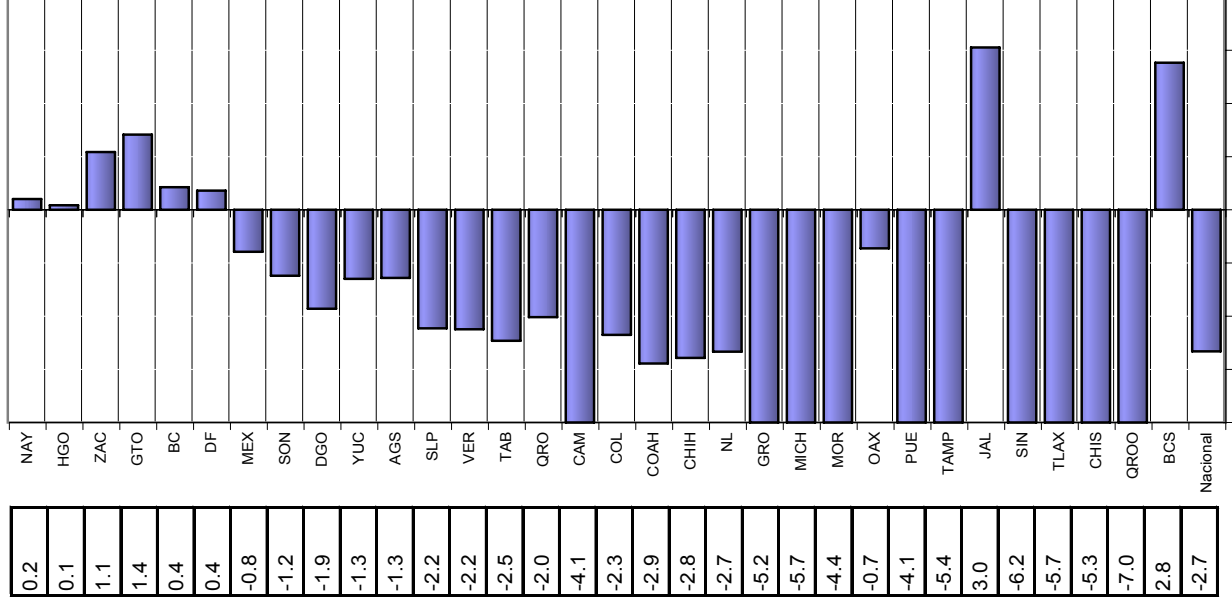
ESTUDIO OPORTUNO



MUESTRAS ADECUADAS



NOTIFICACION



DEFINICION DE INDICADORES QUE INTEGRAN LA EVALUACION DE EFE

1. Estudio Oportuno: Número de casos estudiados en los primeros 2 días después de su notificación / Número de casos notificados en el periodo X 100

2. Oportunidad: Número de informes recibidos dentro del periodo establecido / total de informes esperados x 100

3. Calidad: Número de informes recibidos dentro del periodo establecido con el registro de las variables seleccionadas, sin error / total informes recibidos dentro del periodo establecido X 100