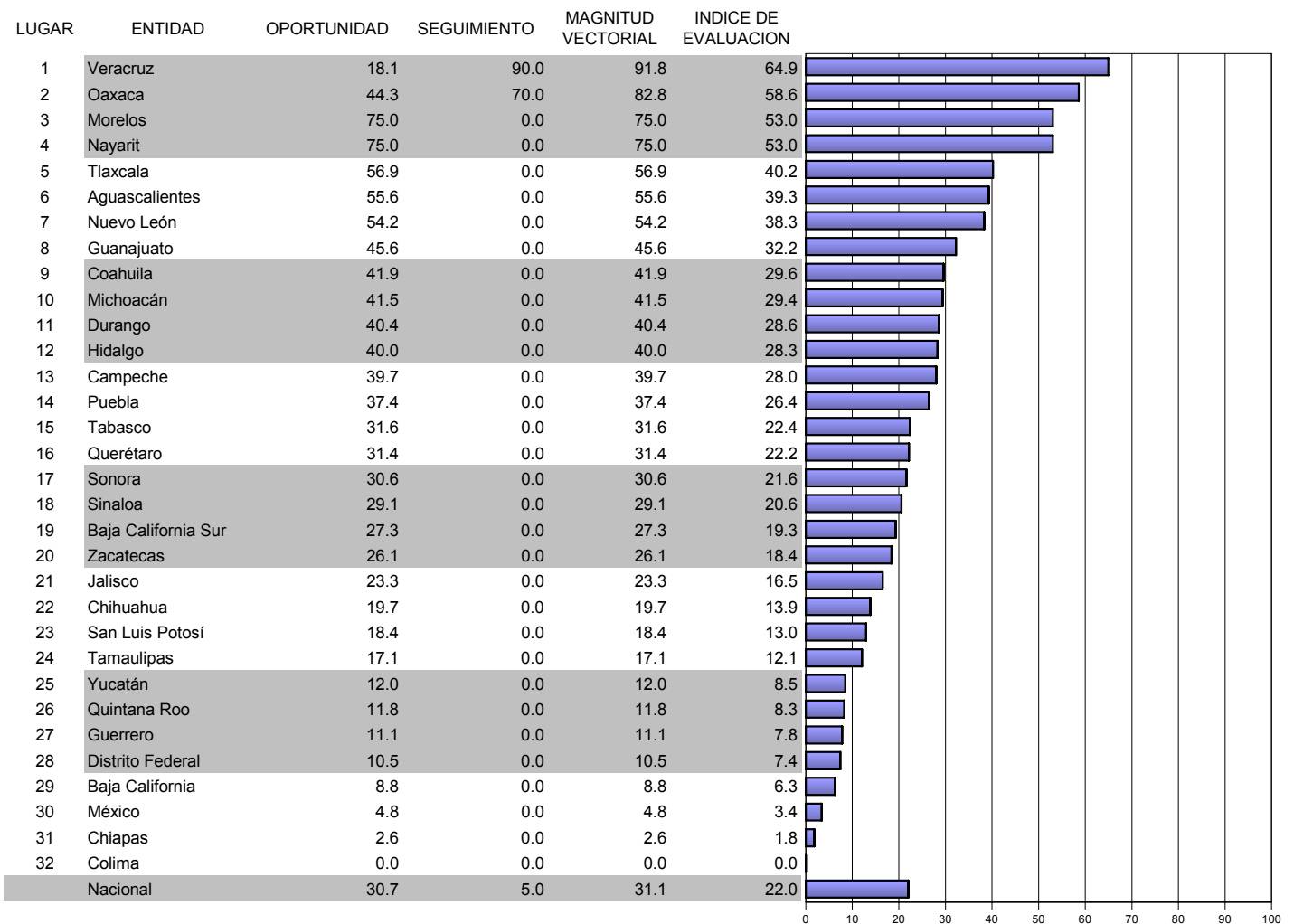






Caminando a la Excelencia

Informe

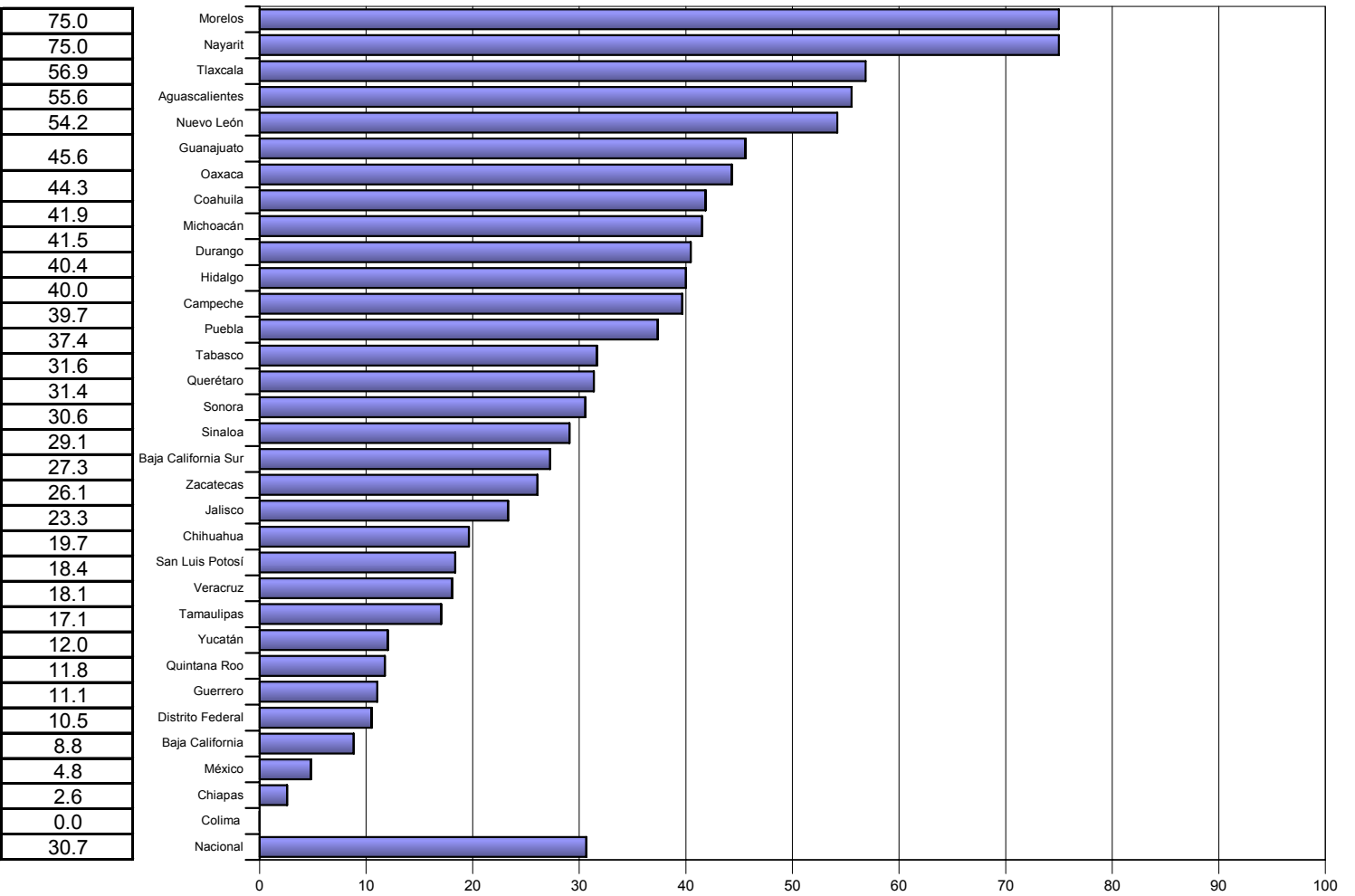
cierre 2002



Categoría	Intervalo	Gradiente de evaluación
Sobresaliente	> 90.0	
Satisfactorio	80.0-90.0	
Mínimo	60.0-79.9	
Precario	< 60.0	

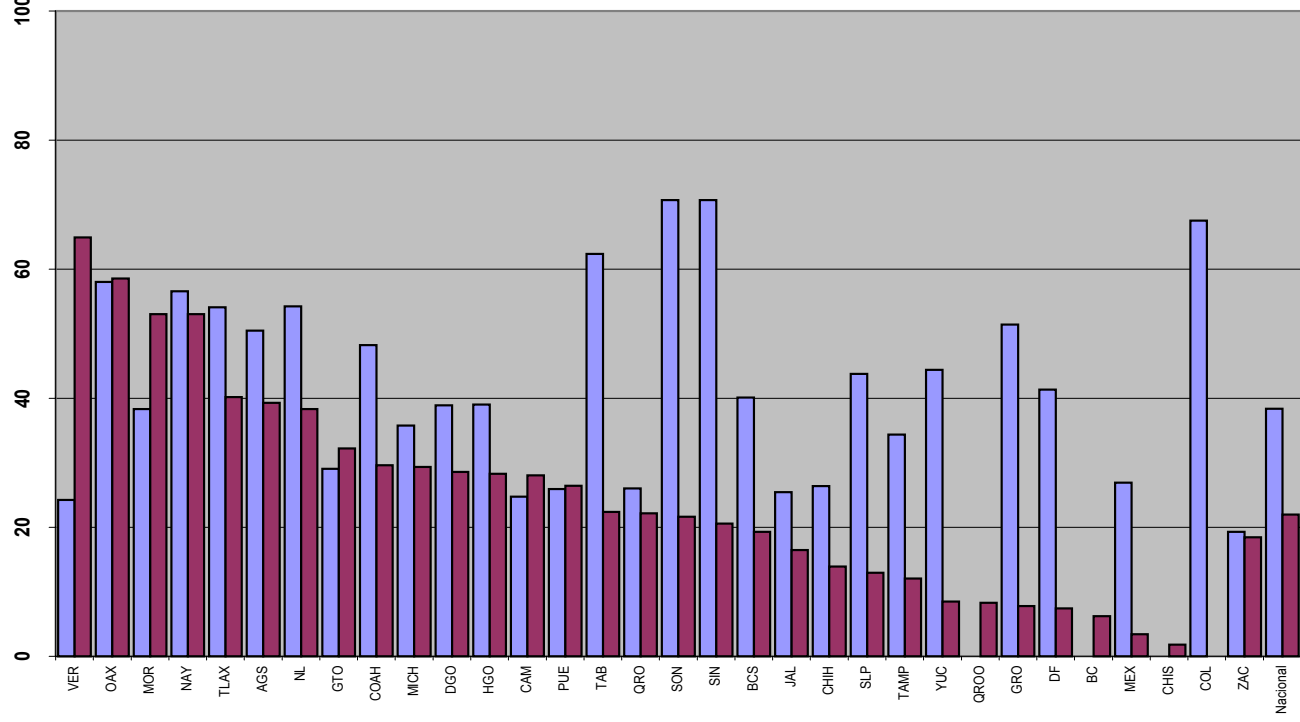
OPORTUNIDAD

INDICE DE
EVALUACION

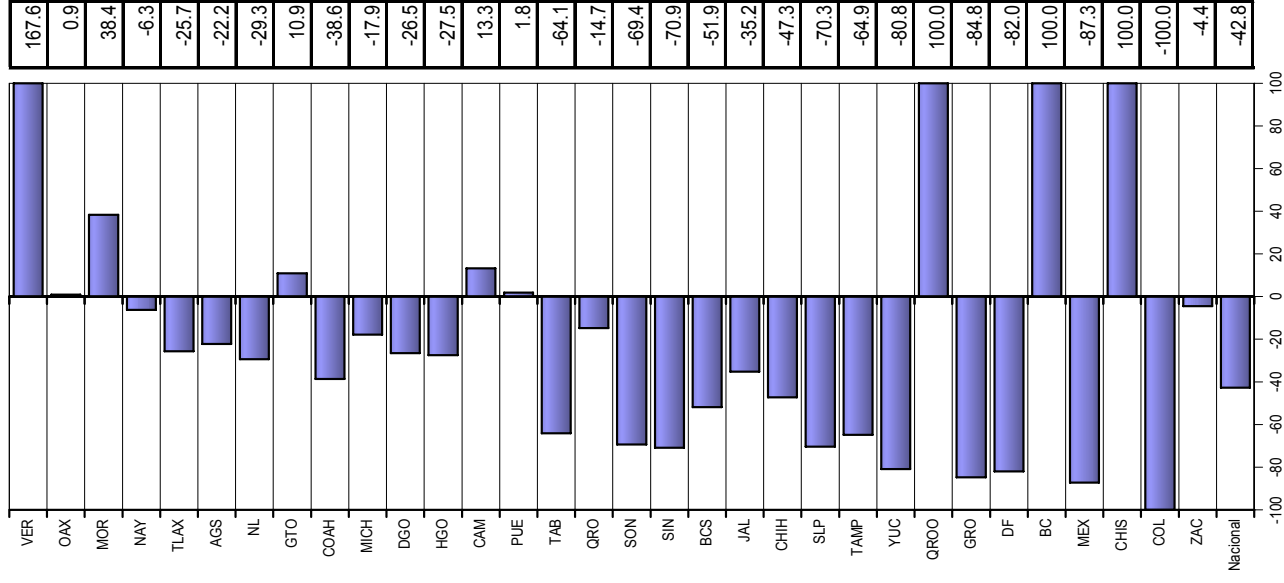


Índice de desempeño vectorial cierre 2001 y cierre 2002

cierre 2001	cierre 2002
24.3	64.9
58.1	58.6
38.3	53.0
56.6	53.0
54.1	40.2
50.5	39.3
54.2	38.3
29.1	32.2
48.2	29.6
35.8	29.4
38.9	28.6
39.0	28.3
24.7	28.0
26.0	26.4
62.4	22.4
26.0	22.2
70.7	21.6
70.7	20.6
40.1	19.3
25.5	16.5
26.4	13.9
43.8	13.0
34.4	12.1
44.4	8.5
0.0	8.3
51.4	7.8
41.4	7.4
0.0	6.3
26.9	3.4
0.0	1.8
67.5	0.0
19.3	18.4
38.4	22.0



Índice de comparación entre cierre 2002 - cierre 2001



(%)

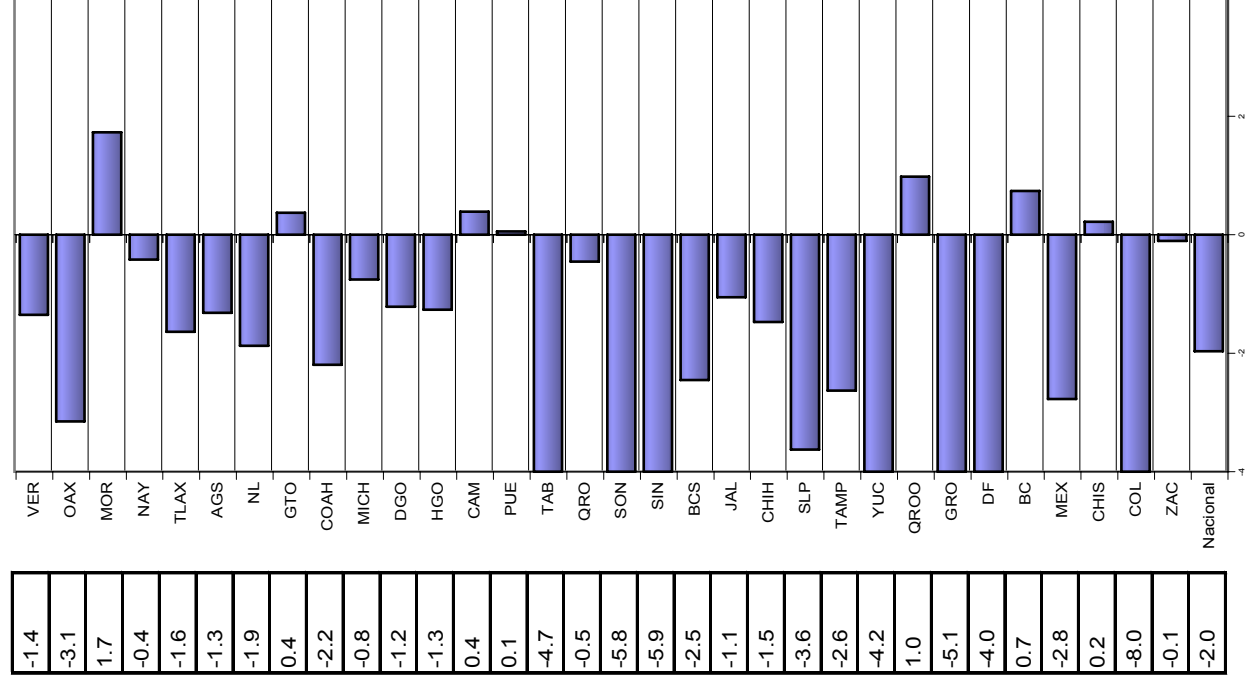
cierre 2001	Vector diferencia entre		cierre 2002
	1	2	
-16.2	90.0	Magnitud	91.4
-37.8	70.0		79.5
20.8	0.0		20.8
-5.0	0.0		5.0
-19.6	0.0		19.6
-15.8	0.0		15.8
-22.5	0.0		22.5
4.5	0.0		4.5
-26.3	0.0		26.3
-9.1	0.0		9.1
-14.6	0.0		14.6
-15.2	0.0		15.2
4.7	0.0		4.7
0.7	0.0		0.7
-56.6	0.0		56.6
-5.4	0.0		5.4
-69.4	0.0		69.4
-70.9	0.0		70.9
-29.4	0.0		29.4
-12.7	0.0		12.7
-17.6	0.0		17.6
-43.5	0.0		43.5
-31.5	0.0		31.5
-50.8	0.0		50.8
11.8	0.0		11.8
-61.6	0.0		61.6
-48.0	0.0		48.0
8.8	0.0		8.8
-33.3	0.0		33.3
2.6	0.0		2.6
-95.5	0.0		95.5
-1.2	0.0		1.2
-23.6	5.0	INDICADORES	24.1

Velocidad de cambio de los componentes de SIDA para el periodo

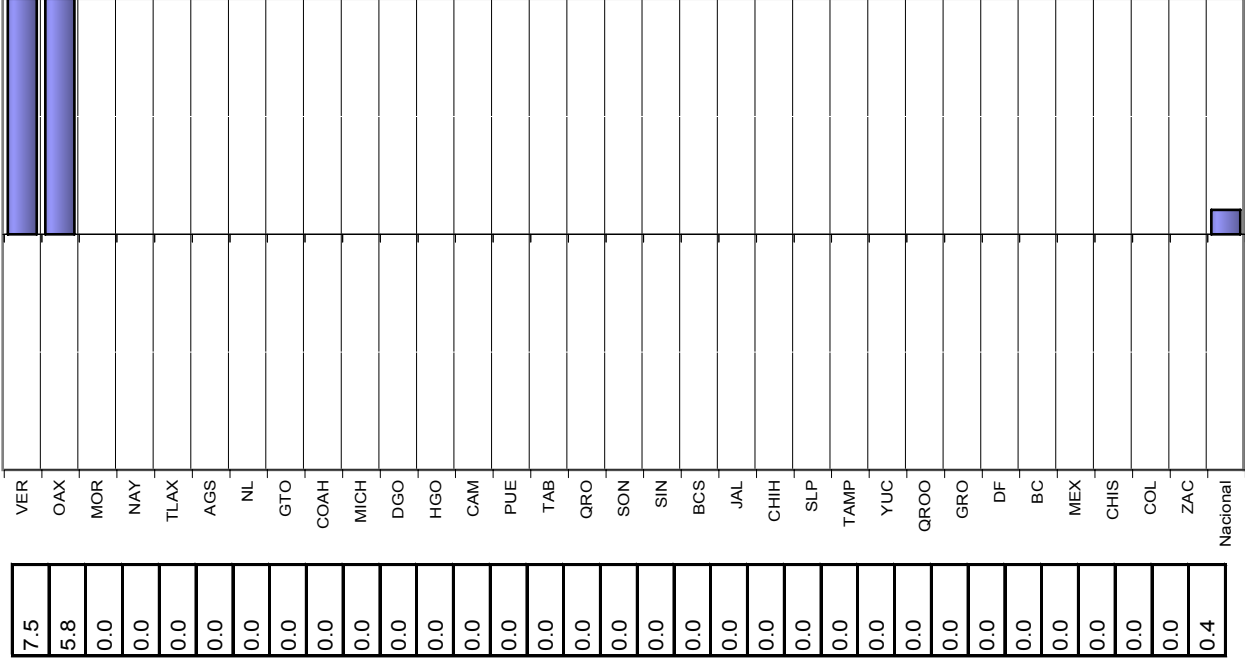
cierre 2001

- cierre 2002

COBERTURA



SEGUIMIENTO



DEFINICION DE INDICADORES QUE INTEGRAN LA EVALUACION DEL SIDA

1.Oportunidad: $\text{Número de casos de sida notificados oportunamente en el periodo} / \text{Número total de casos de SIDA notificados en el periodo} \times 100$

2. Seguimiento: $\text{Número de casos de SIDA vivos con un seguimiento por semestre de acuerdo a la NOM 0-10} / \text{Número de casos vivos al semestre} \times 100$