






Caminando a la Excelencia

Informe

cierre 2002

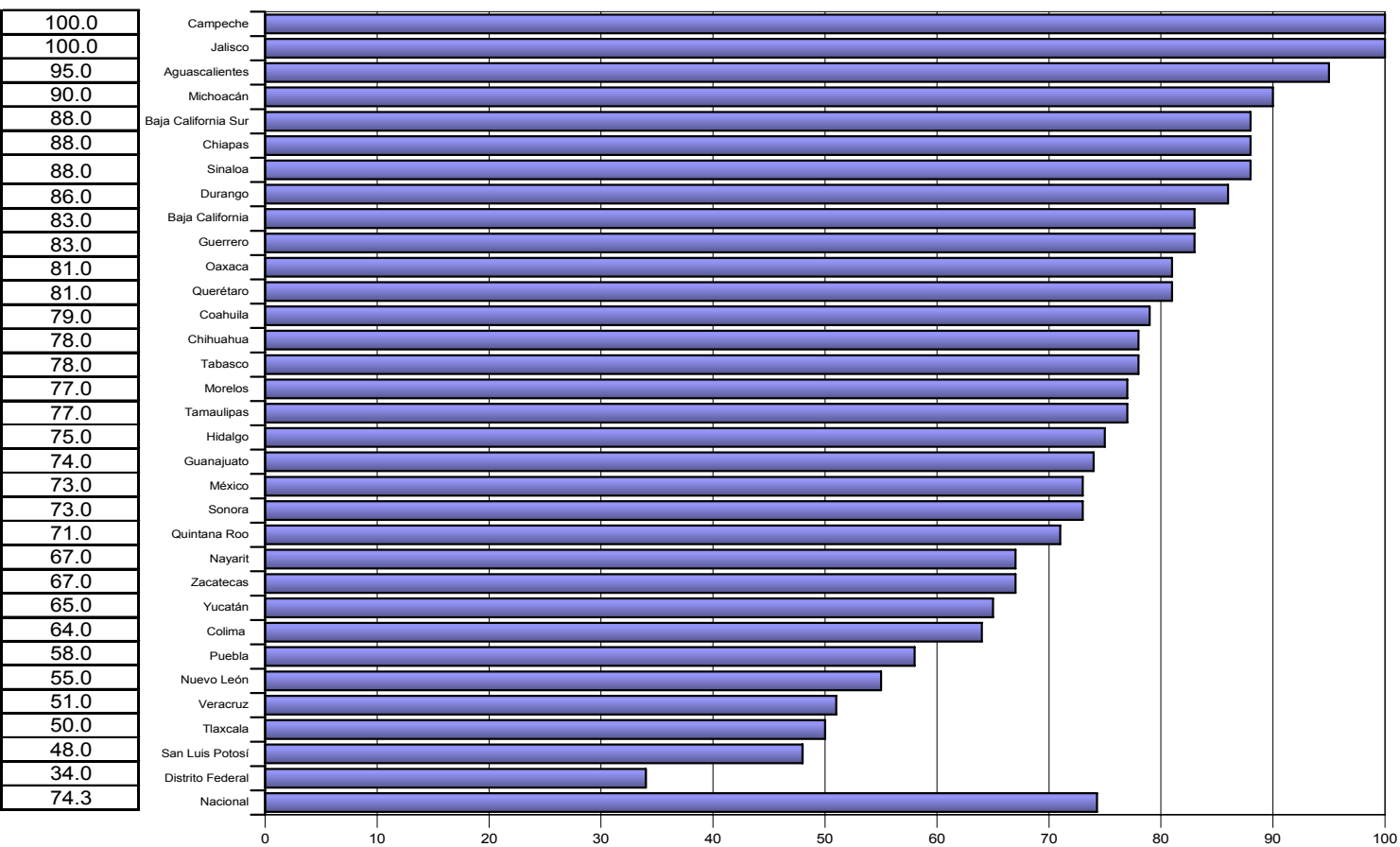
LUGAR	ENTIDAD	COBERTURA	CALIDAD	OPORTUNIDAD	MAGNITUD VECTORIAL	INDICE DE EVALUACION
1	Jalisco	100.0	100.0	100.0	173.2	100.0
2	Aguascalientes	95.0	99.0	100.0	169.8	98.0
3	Michoacán	90.0	100.0	100.0	167.6	96.8
4	Baja California Sur	88.0	100.0	100.0	166.6	96.2
5	Chiapas	88.0	97.0	100.0	164.8	95.1
6	Guerrero	83.0	99.0	100.0	163.4	94.3
7	Campeche	100.0	93.0	88.0	162.5	93.8
8	Tabasco	78.0	99.0	100.0	160.9	92.9
9	Durango	86.0	92.0	100.0	160.8	92.8
10	Coahuila	79.0	95.0	100.0	159.0	91.8
11	Quintana Roo	71.0	100.0	100.0	158.2	91.4
12	Oaxaca	81.0	92.0	100.0	158.2	91.3
13	Querétaro	81.0	92.0	100.0	158.2	91.3
14	Tamaulipas	77.0	95.0	100.0	158.0	91.2
15	Baja California	83.0	100.0	89.0	157.5	90.9
16	Hidalgo	75.0	95.0	100.0	157.0	90.6
17	Morelos	77.0	93.0	100.0	156.8	90.5
18	Chihuahua	78.0	89.0	100.0	154.9	89.5
19	Guanajuato	74.0	91.0	100.0	154.1	89.0
20	Sonora	73.0	89.0	100.0	152.5	88.0
21	México	73.0	95.0	94.0	152.3	87.9
22	Zacatecas	67.0	95.0	98.0	152.0	87.8
23	Nayarit	67.0	92.0	100.0	151.5	87.5
24	Nuevo León	55.0	98.0	100.0	150.4	86.9
25	Sinaloa	88.0	91.0	77.0	148.2	85.5
26	Tlaxcala	50.0	97.0	100.0	148.0	85.5
27	San Luis Potosí	48.0	99.0	99.0	148.0	85.5
28	Puebla	58.0	91.0	100.0	147.1	84.9
29	Colima	64.0	96.0	90.0	146.3	84.5
30	Veracruz	51.0	93.0	100.0	145.8	84.2
31	Yucatán	65.0	90.0	73.0	132.9	76.7
32	Distrito Federal	34.0	91.0	86.0	129.7	74.9
	Nacional	74.3	94.9	96.7	154.5	89.2



Categoría	Intervalo	Gradiente de evaluación
Sobresaliente	> 90.0	
Satisfactorio	80.0-90.0	
Mínimo	60.0-79.9	
Precario	< 60.0	

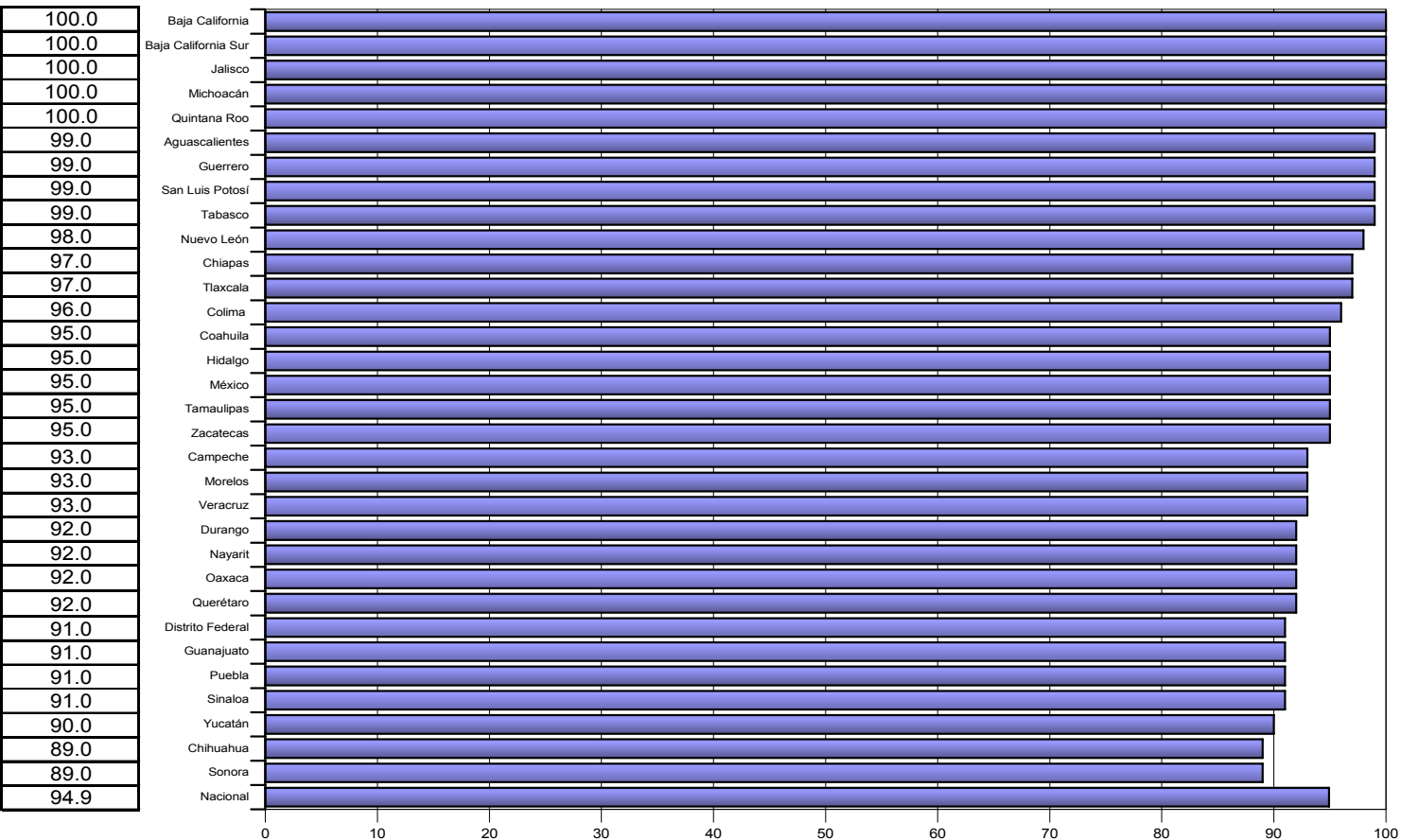
COBERTURA

INDICE DE EVALUACION



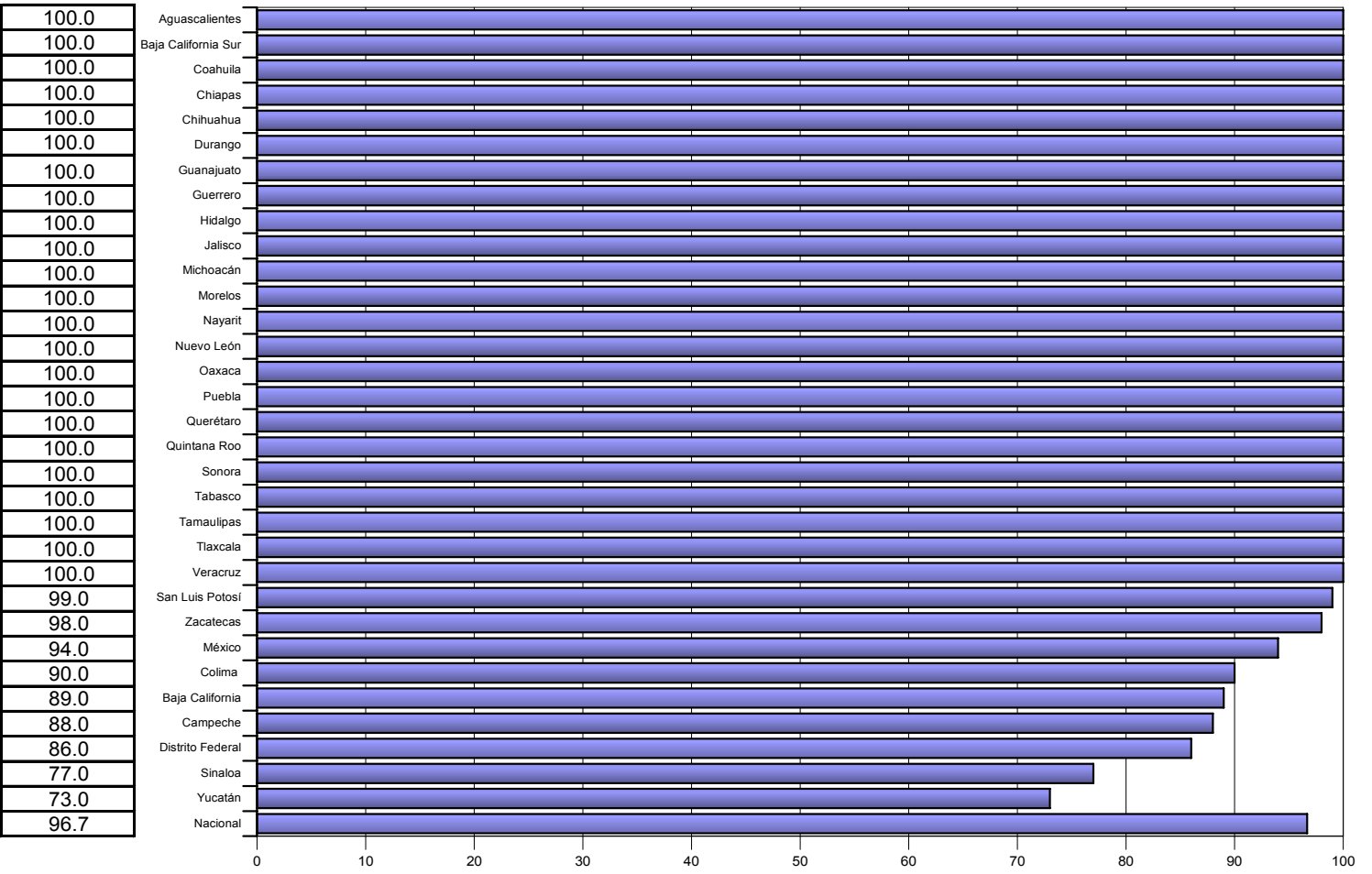
CALIDAD

INDICE DE EVALUACION



OPORTUNIDAD

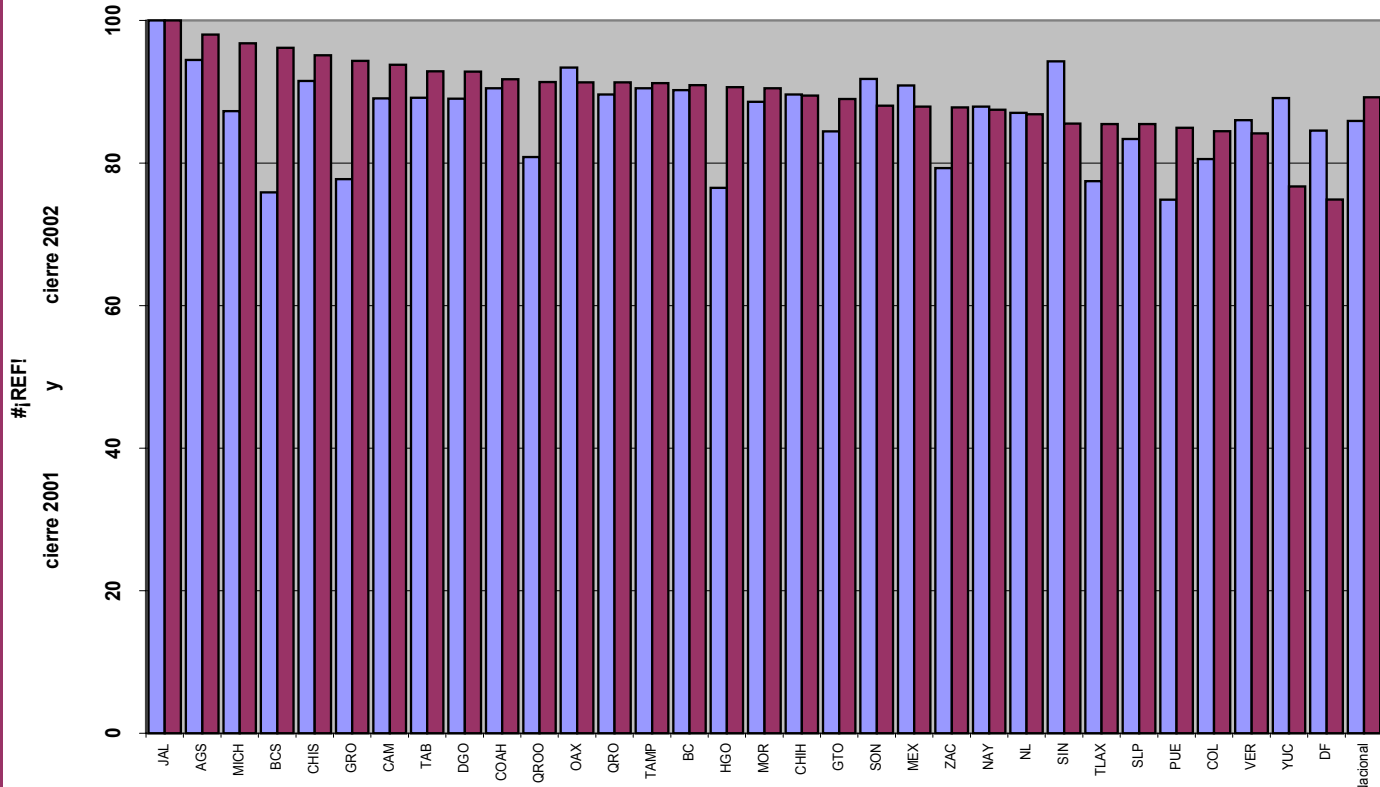
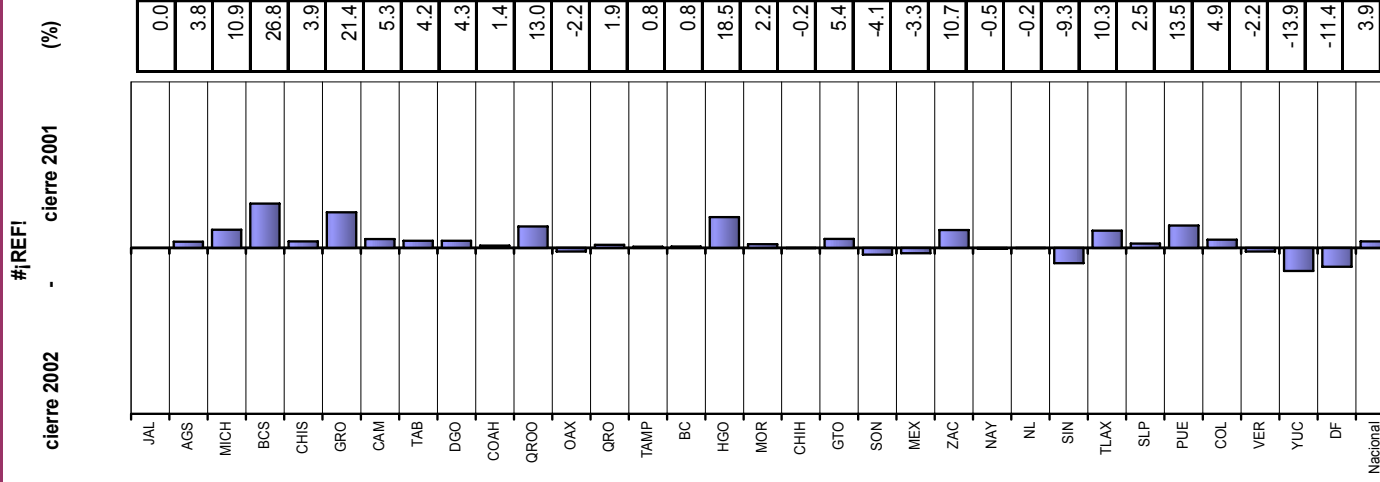
INDICE DE
EVALUACION



	cierre 2001			#REFI y			cierre 2002	Magnitud
	1	2	3	2	3			
JAL	0.0	0.0	0.0	0.0	0.0	0.0	0.0	0.0
AGS	6.0	5.0	0.0	5.0	0.0	0.0	7.8	7.8
MICH	1.0	2.0	27.0	2.0	27.0	27.0	27.1	27.1
BCS	13.0	11.0	39.0	11.0	39.0	39.0	42.6	42.6
CHIS	15.0	-2.0	0.0	-2.0	0.0	0.0	15.1	15.1
GRO	0.0	4.0	53.0	4.0	53.0	53.0	53.2	53.2
CAMI	20.0	7.0	-12.0	7.0	-12.0	-12.0	24.4	24.4
TAB	1.0	10.0	0.0	10.0	0.0	0.0	10.0	10.0
DGO	1.0	2.0	8.0	2.0	8.0	8.0	8.3	8.3
COAH	-4.0	2.0	5.0	2.0	5.0	5.0	6.7	6.7
QROO	51.0	3.0	1.0	3.0	1.0	1.0	51.1	51.1
OAX	0.0	-6.0	0.0	-6.0	0.0	0.0	6.0	6.0
QRO	6.0	0.0	0.0	0.0	0.0	0.0	6.0	6.0
TAMP	0.0	2.0	0.0	2.0	0.0	0.0	2.0	2.0
BC	1.0	9.0	-8.0	9.0	-8.0	-8.0	12.1	12.1
HGO	4.0	-3.0	46.0	-3.0	46.0	46.0	46.3	46.3
MOR	2.0	4.0	0.0	4.0	0.0	0.0	4.5	4.5
CHIH	14.0	-11.0	0.0	-11.0	0.0	0.0	17.8	17.8
GTO	1.0	-3.0	15.0	-3.0	15.0	15.0	15.3	15.3
SON	-1.0	-10.0	0.0	-10.0	0.0	0.0	10.0	10.0
MEX	1.0	-3.0	-6.0	-3.0	-6.0	-6.0	6.8	6.8
ZAC	23.0	2.0	7.0	2.0	7.0	7.0	24.1	24.1
NAY	4.0	-4.0	0.0	-4.0	0.0	0.0	5.7	5.7
NL	-1.0	0.0	0.0	0.0	0.0	0.0	1.0	1.0
SIN	4.0	-7.0	-23.0	-7.0	-23.0	-23.0	24.4	24.4
TLAX	0.0	6.0	15.0	6.0	15.0	15.0	16.2	16.2
SLP	3.0	2.0	2.0	2.0	2.0	2.0	4.1	4.1
PUE	0.0	-7.0	38.0	-7.0	38.0	38.0	38.6	38.6
COL	-14.0	1.0	24.0	1.0	24.0	24.0	27.8	27.8
VER	0.0	-5.0	0.0	-5.0	0.0	0.0	5.0	5.0
YUC	0.0	-8.0	-27.0	-8.0	-27.0	-27.0	28.2	28.2
DF	-4.0	-9.0	-14.0	-9.0	-14.0	-14.0	17.1	17.1
Nacional	4.6	-0.2	5.9	-0.2	5.9	5.9	7.5	7.5

1.COBERTURA 2.CALIDAD 3.OPORTUNIDAD

INDICADORES



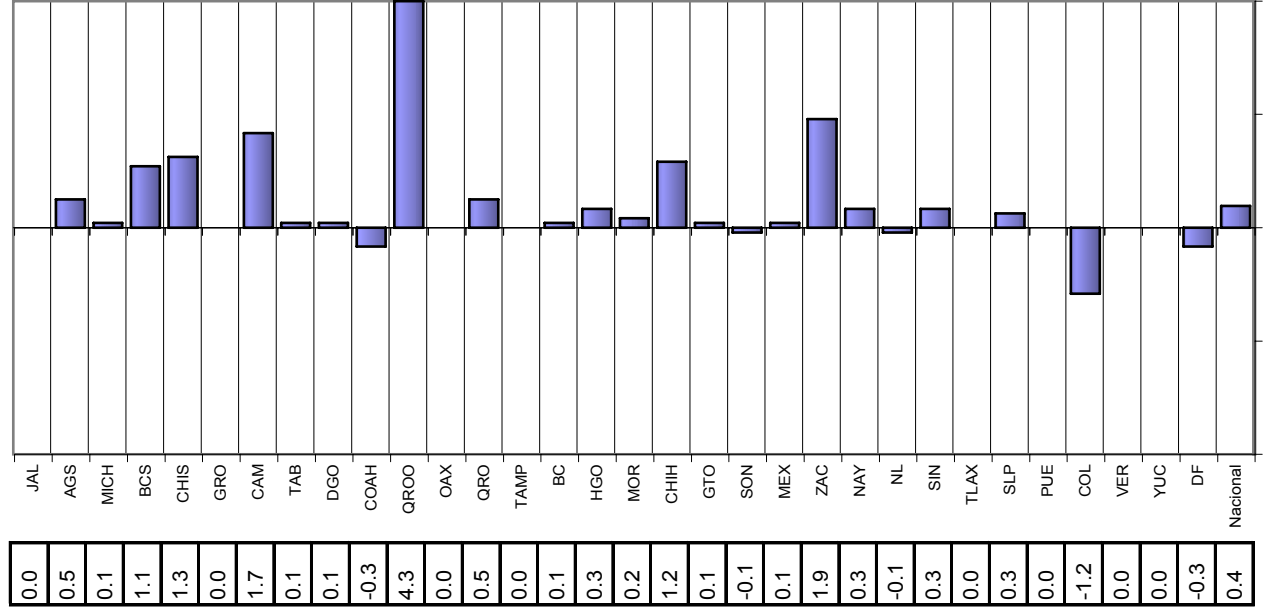
#REFI	#REFI
100.0	100.0
94.4	98.0
87.3	96.8
75.9	96.2
91.5	95.1
77.7	94.3
89.1	93.8
89.2	92.9
89.0	92.8
90.5	91.8
80.8	91.4
93.4	91.3
89.6	91.3
90.5	91.2
90.2	90.9
76.5	90.6
88.6	90.5
89.6	89.5
84.4	89.0
91.8	88.0
90.9	87.9
79.3	87.8
87.9	87.5
87.1	86.9
94.3	85.5
77.5	85.5
83.4	85.5
74.9	84.9
80.6	84.5
86.0	84.2
89.1	76.7
84.5	74.9
85.9	89.2

Velocidad de cambio de los componentes de los Programas de RHNM para el periodo

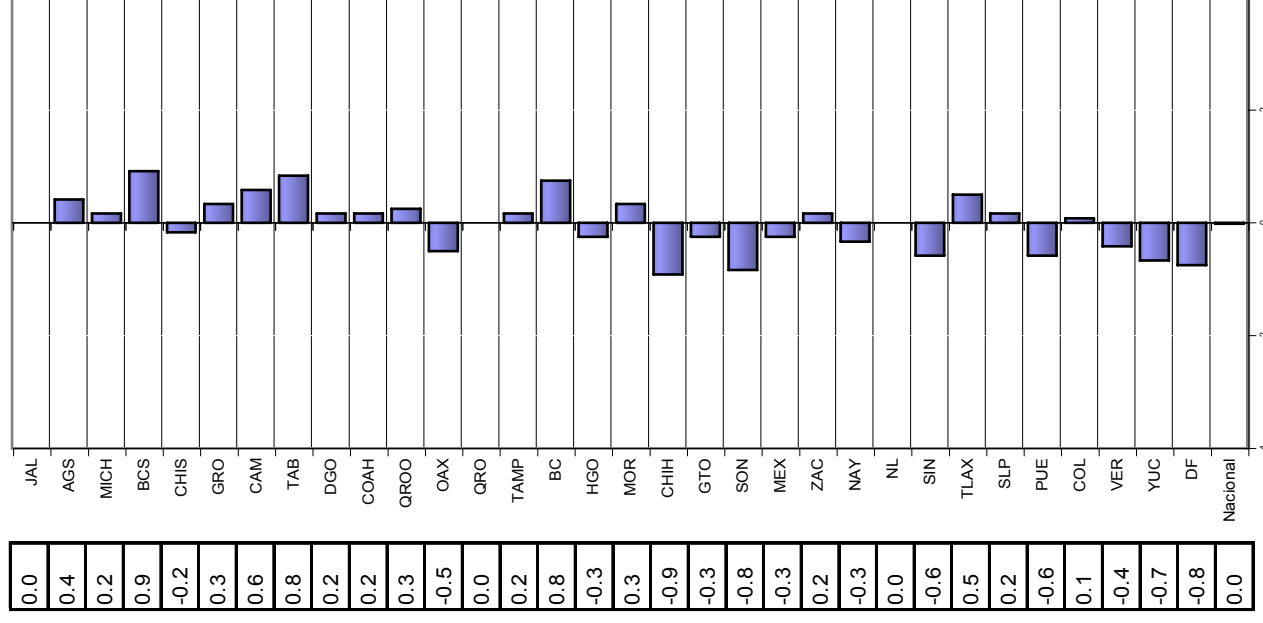
cierre 2002

cierre 2001

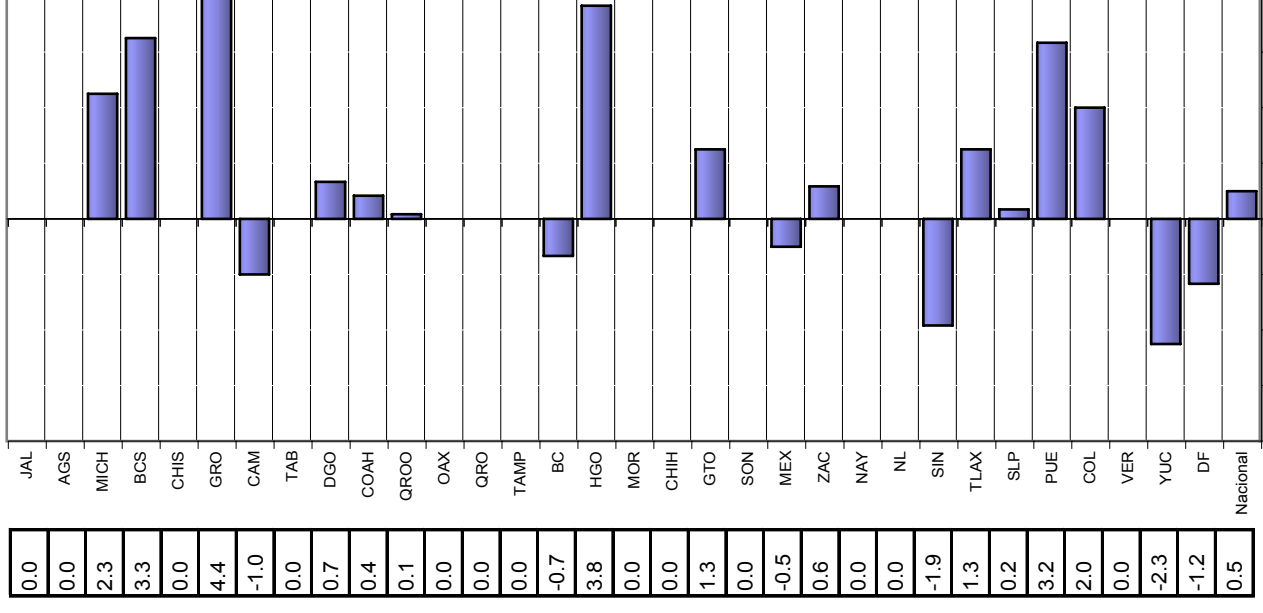
COBERTURA



CALIDAD



CUMPLIMIENTO



DEFINICION DE INDICADORES QUE INTEGRAN LA EVALUACION DE RHNM

1. Cobertura: Número de unidades de diagnóstico que opera en el sistema / total de unidades de diagnóstico existentes

2. Oportunidad: Número de informes recibidos dentro del periodo establecido / total de informes recibidos

3. Calidad: Número de informes recibidos con el registro de todas las variables y sin error / total informes recibidos